

CaMKIBeta Polyclonal Antibody

Description

Product type	Primary Antibody
Code	BT-AP01149
Host	Rabbit
Isotype	IgG
Size	20ul, 50ul, 100ul
Immunogen	The antiserum was produced against synthesized peptide derived from human CaMK1-beta. AA range:161-210
Mol wt	38500
Species reactivity	Human, Mouse, Rat
Clonality	Polyclonal
Recommended application	WB, IHC-p, ELISA
Concentration	1 mg/ml
Full name	CaMKIbeta Antibody
Synonyms	PNCK; Calcium/calmodulin-dependent protein kinase type 1B; CaM kinase I beta; CaM kinase IB; CaM-KI beta; CaMKI-beta; Pregnancy up-regulated non-ubiquitously-expressed CaM kinase

This product is for research use only, not for use in human, therapeutic or diagnostic procedure.

Background

PNCK is a member of the calcium/calmodulin-dependent protein kinase family of protein serine/threonine kinases (see CAMK1; MIM 604998) (Gardner et al. 2000 [PubMed 10673339]).

Recommended Dilution

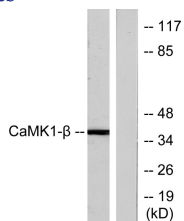
WB: 1: 500 - 1: 2000

IHC: 1: 100 - 1: 300

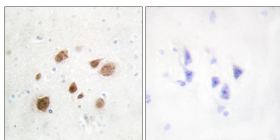
ELISA: 1: 10000

Not yet tested in other applications.

Images



Western blot analysis of lysates from LOVO cells, treated with H₂O₂ 100uM 30', using CaMK1-beta Antibody. The lane on the right is blocked with the synthesized peptide.



Immunohistochemistry analysis of paraffin-embedded human brain tissue, using CaMK1-beta Antibody. The picture on the right is blocked with the synthesized peptide.

Storage

-20°C for one year

501 Changsheng S Rd, Nanhu Dist, Jiaxing, Zhejiang, China

Tel: 86 21 31007137 | E-mail: save@bt-laboratory.com | www.bt-laboratory.com