

Cleaved-PAR-4 (G48) Polyclonal Antibody

Description

Product type	Primary Antibody
Code	BT-AP01958
Host	Rabbit
Isotype	IgG
Size	20ul, 50ul, 100ul
Immunogen	The antiserum was produced against synthesized peptide derived from human PAR4. AA range:29-78
Mol wt	41133
Species reactivity	Human
Clonality	Polyclonal
Recommended application	WB, ELISA
Concentration	1 mg/ml
Full name	Cleaved-PAR-4 (G48) Antibody
Synonyms	F2RL3; PAR4; Proteinase-activated receptor 4; PAR-4; Coagulation factor II receptor-like 3; Thrombin receptor-like 3

This product is for research use only, not for use in human, therapeutic or diagnostic procedure.

Background

Coagulation factor II (thrombin) receptor-like 3 (F2RL3) is a member of the large family of 7-transmembrane-region receptors that couple to guanosine-nucleotide-binding proteins. F2RL3 is also a member of the protease-activated receptor family. F2RL3 is activated by proteolytic cleavage of its extracellular amino terminus. The new amino terminus functions as a tethered ligand and activates the receptor. F2RL3 is activated by thrombin and trypsin.

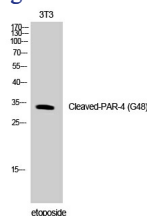
Recommended Dilution

WB: 1: 500 - 1: 2000

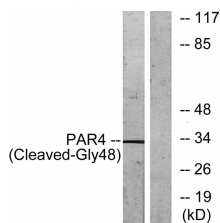
ELISA: 1: 5000

Not yet tested in other applications.

Images



Western Blot analysis of NIH-3T3 cells using Cleaved-PAR-4 (G48) Polyclonal Antibody



Western blot analysis of lysates from NIH/3T3 cells, treated with etoposide 25uM 1h, using PAR4 (Cleaved-Gly48) Antibody. The lane on the right is blocked with the synthesized peptide.

Storage

-20°C for one year

501 Changsheng S Rd, Nanhu Dist, Jiaxing, Zhejiang, China

Tel: 86 21 31007137 | E-mail: save@bt-laboratory.com | www.bt-laboratory.com