

Snrp116 Polyclonal Antibody

Description

Product type	Primary Antibody
Code	BT-AP08431
Host	Rabbit
Isotype	IgG
Size	20ul, 50ul, 100ul
Immunogen	The antiserum was produced against synthesized peptide derived from human EFTUD2. AA range:321-370
Mol wt	109436
Species reactivity	Human, Mouse
Clonality	Polyclonal
Recommended application	WB, IHC-p, ELISA
Concentration	1 mg/ml
Full name	Snrp116 Antibody
Synonyms	EFTUD2; KIAA0031; SNRP116; 116 kDa U5 small nuclear ribonucleoprotein component; Elongation factor Tu GTP-binding domain-containing protein 2; SNU114 homolog; hSNU114; U5 snRNP-specific protein; 116

This product is for research use only, not for use in human, therapeutic or diagnostic procedure.

Background

EFTUD2 encodes a GTPase which is a component of the spliceosome complex which processes precursor mRNAs to produce mature mRNAs. Mutations in this gene are associated with mandibulofacial dysostosis with microcephaly. Multiple transcript variants encoding different isoforms have been found for this gene.

Recommended Dilution

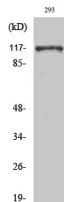
WB: 1: 500 - 1: 2000

IHC: 1: 100 - 1: 300

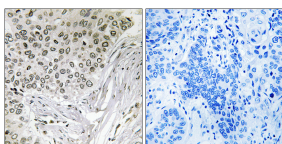
ELISA: 1: 40000

Not yet tested in other applications.

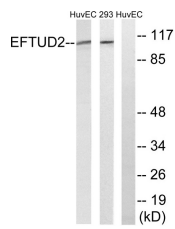
Images



Western Blot analysis of various cells using Snrp116 Polyclonal Antibody cells nucleus.



Immunohistochemistry analysis of paraffin-embedded human lung carcinoma tissue, using EFTUD2 Antibody. The picture on the right is blocked with the synthesized peptide.



Western blot analysis of lysates from 293 and HUVEC cells, using EFTUD2 Antibody. The lane on the right is blocked with the synthesized peptide.

Storage

-20°C for one year

501 Changsheng S Rd, Nanhu Dist, Jiaxing, Zhejiang, China

Tel: 86 21 31007137 | E-mail: save@bt-laboratory.com | www.bt-laboratory.com