

PAHO Polyclonal Antibody

Description

Product type	Primary Antibody
Code	BT-AP12735
Host	Rabbit
Isotype	IgG
Size	20ul, 50ul, 100ul
Immunogen	Synthesized peptide derived from human protein . at AA range: 10-90
Mol wt	N/A
Species reactivity	Human, Rat, Mouse
Clonality	Polyclonal
Recommended application	WB, ELISA
Concentration	1 mg/ml
Full name	Pancreatic prohormone
Synonyms	Pancreatic prohormone ;Pancreatic polypeptide;PP;Obinepitide [Cleaved into: Pancreatic hormone ;PH; Pancreatic icosapeptide ;PI]

This product is for research use only, not for use in human, therapeutic or diagnostic procedure.

Background

This gene encodes a member of the neuropeptide Y (NPY) family of peptides. The encoded 95 aa preproprotein is synthesized in the pancreatic islets of Langerhans and proteolytically processed to generate two peptide products. These products include the active pancreatic hormone of 36 aa and an icosapeptide of unknown function. This hormone acts as a regulator of pancreatic and gastrointestinal functions and may be important in the regulation of food intake. Plasma level of this hormone has been shown to be reduced in conditions associated with increased food intake and elevated in anorexia nervosa. In addition, infusion of this hormone in obese rodents has shown to decrease weight gain. Alternative splicing results in multiple transcript variants, at least one of which encodes an isoform that is proteolytically processed.

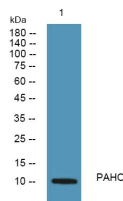
Recommended Dilution

WB: 1: 500 - 1: 2000

ELISA: 1: 5000 - 1: 20000

Not yet tested in other applications.

Images



Western blot analysis of lysates from PC12 cells, primary antibody was diluted at 1:1000, 4°C overnight

Storage

-20°C for 1 year