

## TAAR8 Polyclonal Antibody

### Description

Product type	Primary Antibody
Code	BT-AP14704
Host	Rabbit
Isotype	IgG
Size	20ul, 50ul, 100ul
Immunogen	Synthesized peptide derived from human protein . at AA range: 110-190
Mol wt	N/A
Species reactivity	Human, Rat, Mouse
Clonality	Polyclonal
Recommended application	WB, ELISA
Concentration	1 mg/ml
Full name	Trace amine-associated receptor 8
Synonyms	Trace amine-associated receptor 8 ;TaR-8;Trace amine receptor 8;G-protein coupled receptor 102;Trace amine receptor 5;TaR-5

This product is for research use only, not for use in human, therapeutic or diagnostic procedure.

### Background

This gene is part of the trace amine receptor cluster on chromosome 6 and encodes an orphan G-protein coupled receptor. Upregulated expression of this gene in astroglial cells upon exposure to lipopolysaccharides suggests a function for the encoded protein in the brain.

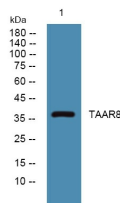
### Recommended Dilution

WB: 1: 500 - 1: 2000

ELISA: 1: 5000 - 1: 20000

Not yet tested in other applications.

### Images



Western blot analysis of lysates from K562 cells, primary antibody was diluted at 1:1000, 4°C overnight

### Storage

-20°C for 1 year