

Galectin-3 Monoclonal Antibody(6G2)

Description

Product type	Primary Antibody
Code	BT-MCA0038
Host	Mouse
Isotype	IgG
Size	20ul, 50ul, 100ul
Immunogen	Synthetic Peptide of Galectin-3
Mol wt	26188
Species reactivity	Human
Clonality	Monoclonal
Recommended application	WB, IF, ICC, IHC-p
Concentration	1 mg/ml
Full name	Galectin-3
Synonyms	LGALS3; MAC2; Galectin-3; Gal-3; 35 kDa lectin; Carbohydrate-binding protein 35; CBP 35; Galactose-specific lectin 3; Galactoside-binding protein; GALBP; IgE-binding protein; L-31; Laminin-binding protein; Lectin L-29; Mac-2 antigen

This product is for research use only, not for use in human, therapeutic or diagnostic procedure.

Background

This gene encodes a member of the galectin family of carbohydrate binding proteins. Members of this protein family have an affinity for beta-galactosides. The encoded protein is characterized by an N-terminal proline-rich tandem repeat domain and a single C-terminal carbohydrate recognition domain. This protein can self-associate through the N-terminal domain allowing it to bind to multivalent saccharide ligands. This protein localizes to the extracellular matrix, the cytoplasm and the nucleus. This protein plays a role in numerous cellular functions including apoptosis, innate immunity, cell adhesion and T-cell regulation. The protein exhibits antimicrobial activity against bacteria and fungi. Alternate splicing results in multiple transcript variants.

Recommended Dilution

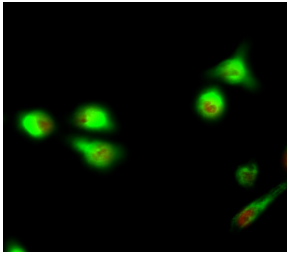
IF: 1:100-200

IHC: 1:200

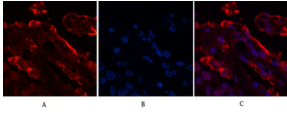
WB: 1:2000

Not yet tested in other applications.

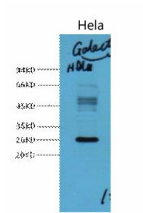
Images



Immunofluorescence analysis of HeLa cell. APC Polyclonal Antibody(red) was diluted at 1:200(4°C overnight). Galectin-3 Monoclonal antibody(6G2)(green) was diluted at 1:200(4°C overnight).



Immunofluorescence analysis of Human-lung-cancer tissue. 1.Galectin-3 Monoclonal antibody(6G2) (red) was diluted at 1:200(4°C,overnight). 2. Cy3 labeled Secondary antibody was diluted at 1:300(room temperature, 50min).3. Picture B: DAPI(blue) 10min. Picture A:Target. Picture B: DAPI. Picture C: merge of A+B



Western blot analysis of HeLa diluted at 1:3000.

Storage

-20°C for one year

501 Changsheng S Rd, Nanhu Dist, Jiaxing, Zhejiang, China

Tel: 86 21 31007137 | E-mail: save@bt-laboratory.com | www.bt-laboratory.com