

## Cytokeratin 7 Monoclonal Antibody

### Description

|                                |  |
|--------------------------------|--|
| <b>Product type</b>            | Primary Antibody   |
| <b>Code</b>                    | BT-MCA0433   |
| <b>Host</b>                    | Mouse  |
| <b>Isotype</b>                 | IgG  |
| <b>Size</b>                    | 50ul, 100ul  |
| <b>Immunogen</b>               | Purified recombinant human Cytokeratin 7 (N-terminus) protein fragments expressed in E.coli.                     |
| <b>Mol wt</b>                  | N/A  |
| <b>Species reactivity</b>      | Human,Mouse,Rat,Bovine   |
| <b>Clonality</b>               | Monoclonal   |
| <b>Recommended application</b> | WB, IF, ICC  |
| <b>Concentration</b>           | 1 mg/ml  |
| <b>Full name</b>               | Keratin type II cytoskeletal 7   |
| <b>Synonyms</b>                | KRT7; SCL; Keratin; type II cytoskeletal 7; Cytokeratin-7; CK-7; Keratin-7; K7; Sarcolectin; Type-II keratin Kb7 |

This product is for research use only, not for use in human, therapeutic or diagnostic procedure.

### Background

The protein encoded by this gene is a member of the keratin gene family. The type II cytokeratins consist of basic or neutral proteins which are arranged in pairs of heterotypic keratin chains coexpressed during differentiation of simple and stratified epithelial tissues. This type II cytokeratin is specifically expressed in the simple epithelia lining the cavities of the internal organs and in the gland ducts and blood vessels. The genes encoding the type II cytokeratins are clustered in a region of chromosome 12q12-q13. Alternative splicing may result in several transcript variants| however, not all variants have been fully described.

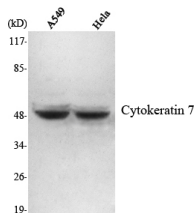
### Recommended Dilution

IF: 1:100 - 1:500

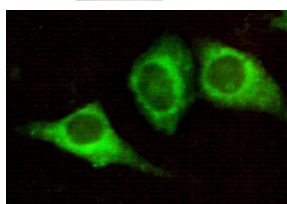
WB: 1:1000 - 1:2000

Not yet tested in other applications.

### Images



Western Blot analysis using Cytokeratin 7 Monoclonal antibody against A459, HeLa cell lysate.



Immunofluorescence analysis of HeLa cells using Cytokeratin 7 Monoclonal antibody.

## Storage

-20°C for one year

501 Changsheng S Rd, Nanhu Dist, Jiaxing, Zhejiang, China

Tel: 86 21 31007137 | E-mail: [save@bt-laboratory.com](mailto:save@bt-laboratory.com) | [www.bt-laboratory.com](http://www.bt-laboratory.com)