

Kif 7 Monoclonal Antibody(3F8)

Description

Product type	Primary Antibody
Code	BT-MCA0809
Host	Mouse
Isotype	IgG
Size	20ul, 50ul, 100ul
Immunogen	Synthetic Peptide of Kif 7
Mol wt	N/A
Species reactivity	Human,Mouse,Rat
Clonality	Monoclonal
Recommended application	IHC-P, IF, ICC
Concentration	1 mg/ml
Full name	Kinesin-like protein KIF7
Synonyms	Kinesin-like protein KIF7

This product is for research use only, not for use in human, therapeutic or diagnostic procedure.

Background

This gene encodes a cilia-associated protein belonging to the kinesin family. This protein plays a role in the sonic hedgehog (SHH) signaling pathway through the regulation of GLI transcription factors. It functions as a negative regulator of the SHH pathway by preventing inappropriate activation of GLI2 in the absence of ligand, and as a positive regulator by preventing the processing of GLI3 into its repressor form. Mutations in this gene have been associated with various ciliopathies.

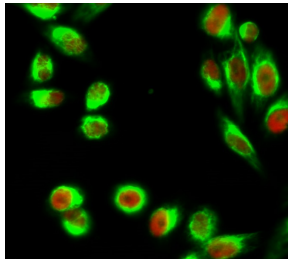
Recommended Dilution

IF: 1:50-200

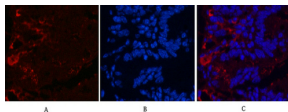
WB: 500-2000 1:200

Not yet tested in other applications.

Images



Immunofluorescence analysis of HeLa cell. C/EBP Beta Polyclonal Antibody(red) was diluted at 1:200(4°C overnight). Kif 7 Monoclonal antibody(3F8)(green) was diluted at 1:200(4°C overnight).



Immunofluorescence analysis of Mouse-colon tissue. 1.Kif 7 Monoclonal antibody(3F8)(red) was diluted at 1:200(4°C,overnight). 2. Cy3 labeled Secondary antibody was diluted at 1:300(room temperature, 50min).3. Picture B: DAPI(blue) 10min. Picture A:Target. Picture B: DAPI. Picture C: merge of A+B

Storage

-20°C for one year

501 Changsheng S Rd, Nanhu Dist, Jiaxing, Zhejiang, China
Tel: 86 21 31007137 | E-mail: save@bt-laboratory.com | www.bt-laboratory.com