

11 Beta-HSD1 Polyclonal Antibody

Description

Product type	Primary Antibody
Code	BT-AP00001
Host	Rabbit
Isotype	IgG
Size	20ul, 50ul, 100ul
Immunogen	The antiserum was produced against synthesized peptide derived from human HSD11B1. AA range:1-50
Mol wt	32401
Species reactivity	Human, Mouse, Rat
Clonality	Polyclonal
Recommended application	WB, IHC-p, ELISA
Concentration	1 mg/ml
Full name	11beta-HSD1 Antibody
Synonyms	HSD11B1; HSD11; HSD11L; Corticosteroid 11-beta-dehydrogenase isozyme 1; 11-beta-hydroxysteroid dehydrogenase 1; 11-DH; 11-beta-HSD1

This product is for research use only, not for use in human, therapeutic or diagnostic procedure.

Background

Hydroxysteroid 11-beta dehydrogenase 1 encoded by HSD11B1 is a microsomal enzyme that catalyzes the conversion of the stress hormone cortisol to the inactive metabolite cortisone. In addition, the encoded protein can catalyze the reverse reaction, the conversion of cortisone to cortisol. Too much cortisol can lead to central obesity, and a particular variation in HSD11B1 has been associated with obesity and insulin resistance in children. Mutations in HSD11B1 and H6PD (hexose-6-phosphate dehydrogenase (glucose 1-dehydrogenase)) are the cause of cortisone reductase deficiency. Alternate splicing results in multiple transcript variants encoding the same protein.

Recommended Dilution

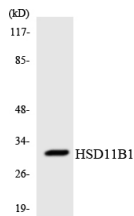
WB: 1: 500 - 1: 2000

IHC: 1: 100 - 1: 300

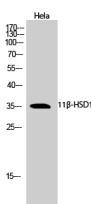
ELISA: 1: 40000

Not yet tested in other applications.

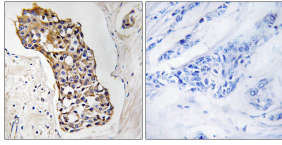
Images



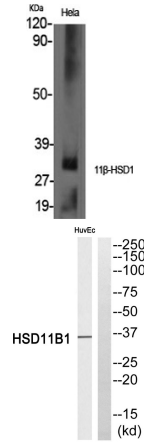
Western blot analysis of the lysates from HUVEC cells using HSD11B1 antibody.



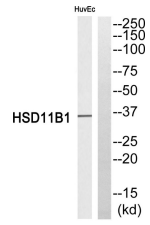
Western Blot analysis of HeLa cells using 11β-HSD1 Polyclonal Antibody



Immunohistochemistry analysis of paraffin-embedded human breast carcinoma, using HSD11B1 Antibody. The lane on the right is blocked with the HSD11B1 peptide.



Western Blot analysis of various cells using 11β-HSD1 Polyclonal Antibody



Western blot analysis of HSD11B1 Antibody. The lane on the right is blocked with the HSD11B1 peptide.

Storage

-20°C for one year

501 Changsheng S Rd, Nanhu Dist, Jiaxing, Zhejiang, China

Tel: 86 21 31007137 | E-mail: save@bt-laboratory.com | www.bt-laboratory.com