

14-3-3 Beta Polyclonal Antibody

Description

Product type	Primary Antibody
Code	BT-AP00004
Host	Rabbit
Isotype	IgG
Size	20ul, 50ul, 100ul
Immunogen	The antiserum was produced against synthesized peptide derived from human YWHAZ. AA range:151-200
Mol wt	27745
Species reactivity	Human, Mouse, Rat
Clonality	Polyclonal
Recommended application	WB, IHC-p, ELISA
Concentration	1 mg/ml
Full name	14-3-3 beta Antibody
Synonyms	YWHAZ; 14-3-3 protein zeta/delta; Protein kinase C inhibitor protein 1; KCIP-1; YWHAB; 14-3-3 protein beta/alpha; Protein 1054; Protein kinase C inhibitor protein 1; KCIP-1

This product is for research use only, not for use in human, therapeutic or diagnostic procedure.

Background

YWHAZ (tyrosine 3-monooxygenase/tryptophan 5-monooxygenase activation protein zeta) product belongs to the 14-3-3 family of proteins which mediate signal transduction by binding to phosphoserine-containing proteins. This highly conserved protein family is found in both plants and mammals, and this protein is 99% identical to the mouse, rat and sheep orthologs. The encoded protein interacts with IRS1 protein, suggesting a role in regulating insulin sensitivity. Several transcript variants that differ in the 5' UTR but that encode the same protein have been identified for YWHAZ.

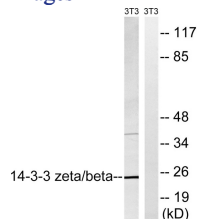
Recommended Dilution

WB: 1: 500 - 1: 2000

ELISA: 1: 20000

Not yet tested in other applications.

Images



Western blot analysis of lysates from NIH/3T3 cells, using 14-3-3 beta/zeta Antibody. The lane on the right is blocked with the synthesized peptide.

Storage

-20°C for one year