

14-3-3 Gamma Polyclonal Antibody

Description

Product type	Primary Antibody
Code	BT-AP00005
Host	Rabbit
Isotype	IgG
Size	20ul, 50ul, 100ul
Immunogen	The antiserum was produced against synthesized peptide derived from human 14-3-3 gamma. AA range:51-100
Mol wt	28303
Species reactivity	Human, Mouse, Rat
Clonality	Polyclonal
Recommended application	WB, IHC-p, IF, ELISA
Concentration	1 mg/ml
Full name	14-3-3 gamma Antibody
Synonyms	YWHAG; 14-3-3 protein gamma; Protein kinase C inhibitor protein 1; KCIP-1

This product is for research use only, not for use in human, therapeutic or diagnostic procedure.

Background

YWHAG (tyrosine 3-monooxygenase/tryptophan 5-monooxygenase activation protein gamma) product belongs to the 14-3-3 family of proteins which mediate signal transduction by binding to phosphoserine-containing proteins. This highly conserved protein family is found in both plants and mammals, and this protein is 100% identical to the rat ortholog. It is induced by growth factors in human vascular smooth muscle cells, and is also highly expressed in skeletal and heart muscles, suggesting an important role for this protein in muscle tissue. It has been shown to interact with RAF1 and protein kinase C, proteins involved in various signal transduction pathways.

Recommended Dilution

WB: 1: 500 - 1: 2000

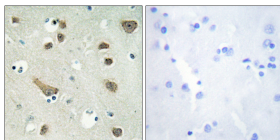
IHC: 1: 100 - 1: 300

IF: 1: 200 - 1: 1000

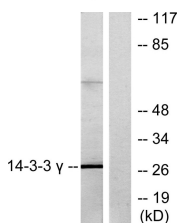
ELISA: 1: 10000

Not yet tested in other applications.

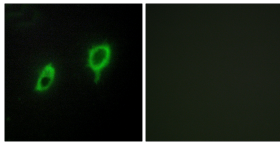
Images



Immunohistochemistry analysis of paraffin-embedded human brain tissue, using 14-3-3 gamma Antibody. The picture on the right is blocked with the synthesized peptide.



Western blot analysis of lysates from K562 cells, treated with insulin 0.01U/ml 15', using 14-3-3 gamma Antibody. The lane on the right is blocked with the synthesized peptide.



Immunofluorescence analysis of COS7 cells, using 14-3-3 gamma Antibody. The picture on the right is blocked with the synthesized peptide.

Storage

-20°C for one year

501 Changsheng S Rd, Nanhu Dist, Jiaxing, Zhejiang, China

Tel: 86 21 31007137 | E-mail: save@bt-laboratory.com | www.bt-laboratory.com