

14-3-3 Epsilon Polyclonal Antibody

Description

Product type	Primary Antibody
Code	BT-AP00007
Host	Rabbit
Isotype	IgG
Size	20ul, 50ul, 100ul
Immunogen	Recombinant Protein of 14-3-3 ϵ
Mol wt	28303
Species reactivity	Mouse, Rat
Clonality	Polyclonal
Recommended application	WB, IHC-p
Concentration	1 mg/ml
Full name	14-3-3 epsilon Antibody
Synonyms	YWHAE; 14-3-3 protein epsilon; 14-3-3E

This product is for research use only, not for use in human, therapeutic or diagnostic procedure.

Background

YWHAG (tyrosine 3-monooxygenase/tryptophan 5-monooxygenase activation protein gamma) product belongs to the 14-3-3 family of proteins which mediate signal transduction by binding to phosphoserine-containing proteins. This highly conserved protein family is found in both plants and mammals, and this protein is 100% identical to the rat ortholog. It is induced by growth factors in human vascular smooth muscle cells, and is also highly expressed in skeletal and heart muscles, suggesting an important role for this protein in muscle tissue. It has been shown to interact with RAF1 and protein kinase C, proteins involved in various signal transduction pathways.

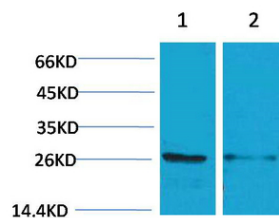
Recommended Dilution

WB: 1: 1000

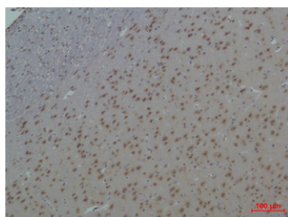
IHC: 1: 200 - 500

Not yet tested in other applications.

Images



Western blot analysis of 1) Mouse Brain, 2) Rat Brain using 14-3-3 Polyclonal Antibody. Secondary antibody was diluted at 1:20000



Immunohistochemical analysis of paraffin-embedded Rat Brain Tissue using 14-3-3 ϵ Polyclonal Antibody.

Storage

-20°C for one year

501 Changsheng S Rd, Nanhu Dist, Jiaxing, Zhejiang, China

Tel: 86 21 31007137 | E-mail: save@bt-laboratory.com | www.bt-laboratory.com