

14-3-3 Zeta Polyclonal Antibody

Description

Product type	Primary Antibody
Code	BT-AP00009
Host	Rabbit
Isotype	IgG
Size	20ul, 50ul, 100ul
Immunogen	The antiserum was produced against synthesized peptide derived from human 14-3-3 zeta. AA range:24-73
Mol wt	27745
Species reactivity	Human, Mouse, Rat
Clonality	Polyclonal
Recommended application	WB, IHC-p, IP, IF, ELISA
Concentration	1 mg/ml
Full name	14-3-3 zeta Antibody
Synonyms	YWHAZ; 14-3-3 protein zeta/delta; Protein kinase C inhibitor protein 1; KCIP-1

This product is for research use only, not for use in human, therapeutic or diagnostic procedure.

Background

Tyrosine 3-monooxygenase/tryptophan 5-monooxygenase activation protein zeta belongs to the 14-3-3 family of proteins which mediate signal transduction by binding to phosphoserine-containing proteins. This highly conserved protein family is found in both plants and mammals, and this protein is 99% identical to the mouse, rat and sheep orthologs. The encoded protein interacts with IRS1 protein, suggesting a role in regulating insulin sensitivity. Several transcript variants that differ in the 5' UTR but that encode the same protein have been identified for YWHAZ.

Recommended Dilution

WB: 1: 500 - 1: 2000

IHC: 1: 100 - 1: 300

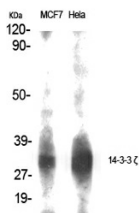
IP: 2 - 5 ug: mg lysate

ELISA: 1: 40000

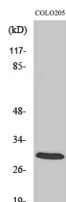
IF: 1: 200 - 1: 1000

Not yet tested in other applications.

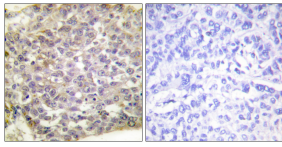
Images



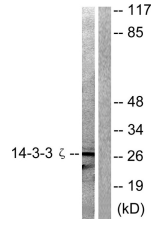
Western Blot analysis of various cells using 14-3-3 ζ Polyclonal Antibody diluted at 1:1000



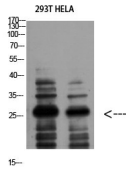
Western Blot analysis of COLO205 cells using 14-3-3 ζ Polyclonal Antibody diluted at 1:1000



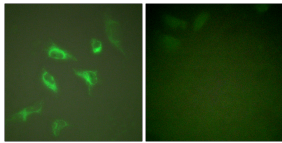
Immunohistochemistry analysis of paraffin-embedded human breast carcinoma tissue, using 14-3-3 zeta Antibody. The picture on the right is blocked with the synthesized peptide.



Western blot analysis of lysates from 293 cells, treated with Forskolin 40nM 30', using 14-3-3 zeta Antibody. The lane on the right is blocked with the synthesized peptide.



Western Blot analysis of 293T HELA using 14-3-3 ζ Polyclonal Antibody diluted at 1:1000. Secondary antibody was diluted at 1:20000



Immunofluorescence analysis of HeLa cells, using 14-3-3 zeta Antibody. The picture on the right is blocked with the synthesized peptide.

Storage

-20°C for one year

501 Changsheng S Rd, Nanhu Dist, Jiaxing, Zhejiang, China

Tel: 86 21 31007137 | E-mail: save@bt-laboratory.com | www.bt-laboratory.com