

14-3-3 theta/tau(Phospho Ser232) Polyclonal Antibody

Description

Product type	Primary Antibody
Code	BT-AP00027
Host	Rabbit
Isotype	IgG
Size	100ul, 50ul, 20ul
Immunogen	The antiserum was produced against synthesized peptide derived from human 14-3-3 thet/tau around the phosphorylation site of Ser232. AA range:196-245
Mol wt	27764
Species reactivity	Human, Mouse, Rat
Clonality	Polyclonal
Recommended application	WB, IHC-p, IF, ICC, ELISA
Concentration	1 mg/ml
Full name	14-3-3 protein theta
Synonyms	YWHAQ; YWHAQ; 14-3-3 protein theta; 14-3-3 protein T-cell; 14-3-3 protein tau; Protein HS1

This product is for research use only, not for use in human, therapeutic or diagnostic procedure.

Background

This gene product belongs to the 14-3-3 family of proteins which mediate signal transduction by binding to phosphoserine-containing proteins. This highly conserved protein family is found in both plants and mammals, and this protein is 99% identical to the mouse and rat orthologs. This gene is upregulated in patients with amyotrophic lateral sclerosis. It contains in its 5' UTR a 6 bp tandem repeat sequence which is polymorphic, however, there is no correlation between the repeat number and the disease.

Recommended Dilution

WB: 1: 500 - 1: 2000

IHC-p: 1: 100 - 1: 300

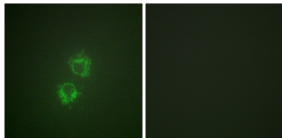
IF: 1: 200 - 1: 1000

ICC: 1: 200 - 1: 1000

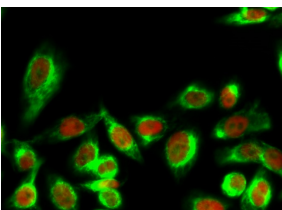
ELISA: 1: 5000

Not yet tested in other applications.

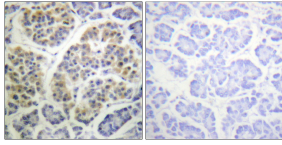
Images



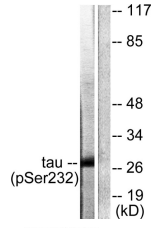
Immunofluorescence analysis of HeLa cell. 14-3-3 θ/τ (phospho Ser232) Polyclonal Antibody(Green) was diluted at 1:200(4°C overnight). (Red) was diluted at 1:200(4°C overnight).



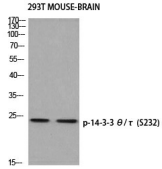
Immunofluorescence analysis of HeLa cells, using 14-3-3 thet/tau (Phospho-Ser232) Antibody. The picture on the right is blocked with the phospho peptide.



Immunohistochemistry analysis of paraffin-embedded human pancreas, using 14-3-3 thet/tau (Phospho-Ser232) Antibody. The picture on the right is blocked with the phospho peptide.



Western blot analysis of 293T MOUSE-BRAIN using p-14-3-3 θ/τ (S232) antibody. Antibody was diluted at 1:500



Western blot analysis of lysates from HeLa cells, using 14-3-3 thet/tau (Phospho-Ser232) Antibody. The lane on the right is blocked with the phospho peptide.

Storage

-20°C for 1 year

501 Changsheng S Rd, Nanhu Dist, Jiaxing, Zhejiang, China

Tel: 86 21 31007137 | E-mail: save@bt-laboratory.com | www.bt-laboratory.com