

4.1G Polyclonal Antibody

Description

Product type	Primary Antibody
Code	BT-AP00032
Host	Rabbit
Isotype	IgG
Size	20ul, 50ul, 100ul
Immunogen	Synthesized peptide derived from 4.1G . at AA range: 530-610
Mol wt	112588
Species reactivity	Human
Clonality	Polyclonal
Recommended application	WB, IHC-p, ELISA
Concentration	1 mg/ml
Full name	4.1G Antibody
Synonyms	EPB41L2; Band 4.1-like protein 2; Generally expressed protein 4.1; 4.1G

This product is for research use only, not for use in human, therapeutic or diagnostic procedure.

Background

The 4.1 gene family encodes a group of multifunctional cytoskeletal proteins (4.1R, 4.1G, 4.1N and 4.1B), which are predominantly expressed in the nervous system. 4.1G is a protein that stabilizes spectrin-actin interactions and is associated with hereditary elliptocytosis. Red blood cell 4.1, designated 4.1R, is a multifunctional protein that is essential for maintaining erythrocyte shape and membrane mechanical properties. Both 4.1R and 4.1G are distributed in a unique pattern in the cerebellum and are believed to modulate the membrane mechanical properties of neuronal cells by promoting fodrin/actin association. 4.1N and 4.1B, designated EPB41L1 and EPB41L3, respectively, are strongly expressed in the brain. Antibodies to 4.1N have been reported to detect multiple forms, each enriched in postsynaptic density preparations relative to brain homogenate. Antibodies to 4.1B have been reported to detect two forms.

Recommended Dilution

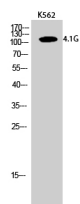
WB: 1: 500 - 1: 2000

IHC: 1: 100 - 1: 300

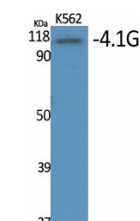
ELISA: 1: 40000

Not yet tested in other applications.

Images



Western Blot analysis of K562 cells using 4.1G Polyclonal Antibody



Western Blot analysis of various cells using 4.1G Polyclonal Antibody

Storage

-20°C for one year

501 Changsheng S Rd, Nanhu Dist, Jiaxing, Zhejiang, China

Tel: 86 21 31007137 | E-mail: save@bt-laboratory.com | www.bt-laboratory.com