

## 53BP1 Polyclonal Antibody

### Description

<b>Product type</b>	Primary Antibody
<b>Code</b>	BT-AP00041
<b>Host</b>	Rabbit
<b>Isotype</b>	IgG
<b>Size</b>	20ul, 50ul, 100ul
<b>Immunogen</b>	The antiserum was produced against synthesized peptide derived from human 53BP1. AA range:14-63
<b>Mol wt</b>	213574
<b>Species reactivity</b>	Human, Mouse
<b>Clonality</b>	Polyclonal
<b>Recommended application</b>	WB, ELISA
<b>Concentration</b>	1 mg/ml
<b>Full name</b>	53BP1 Antibody
<b>Synonyms</b>	TP53BP1; Tumor suppressor p53-binding protein 1; 53BP1; p53-binding protein 1; p53BP1

This product is for research use only, not for use in human, therapeutic or diagnostic procedure.

### Background

TP53BP1 (Tumor Protein P53 Binding Protein 1) is a Protein Coding gene. Diseases associated with TP53BP1 include riddle syndrome and ataxia-telangiectasia. Among its related pathways are DNA Damage and ATM Pathway. GO annotations related to this gene include sequence-specific DNA binding and p53 binding.

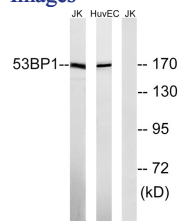
### Recommended Dilution

WB: 1: 500 - 1: 2000

ELISA: 1: 10000

Not yet tested in other applications.

### Images



Western blot analysis of lysates from Jurkat and HUVEC cells, using 53BP1 Antibody. The lane on the right is blocked with the synthesized peptide.

### Storage

-20°C for one year