

A Cyclase VII Polyclonal Antibody

Description

Product type	Primary Antibody
Code	BT-AP00056
Host	Rabbit
Isotype	IgG
Size	20ul, 50ul, 100ul
Immunogen	The antiserum was produced against synthesized peptide derived from human ADCY7. AA range:191-240
Mol wt	120308
Species reactivity	Human, Mouse
Clonality	Polyclonal
Recommended application	IHC-p, IF, ELISA
Concentration	1 mg/ml
Full name	A Cyclase VII Antibody
Synonyms	ADCY7; KIAA0037; Adenylate cyclase type 7; ATP pyrophosphate-lyase 7; Adenylate cyclase type VII; Adenylyl cyclase 7

This product is for research use only, not for use in human, therapeutic or diagnostic procedure.

Background

ADCY7 encodes a membrane-bound adenylate cyclase that catalyses the formation of cyclic AMP from ATP and is inhibitable by calcium. The product of this gene is a member of the adenylyl cyclase class-4/guanylyl cyclase enzyme family that is characterized by the presence of twelve membrane-spanning domains in its sequences. Several transcript variants have been observed for this gene, but the full-length natures of only two have been determined so far.

Recommended Dilution

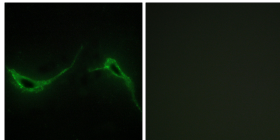
IHC: 1: 100 - 1: 300

IF: 1: 200 - 1: 1000

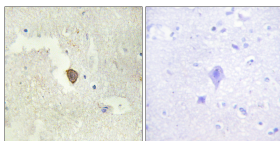
ELISA: 1: 5000

Not yet tested in other applications.

Images



Immunofluorescence analysis of NIH/3T3 cells, using ADCY7 Antibody. The picture on the right is blocked with the synthesized peptide.



Immunohistochemistry analysis of paraffin-embedded human brain tissue, using ADCY7 Antibody. The picture on the right is blocked with the synthesized peptide.

Storage

-20°C for one year