

A Cyclase VIII Polyclonal Antibody

Description

Product type	Primary Antibody
Code	BT-AP00057
Host	Rabbit
Isotype	IgG
Size	20ul, 50ul, 100ul
Immunogen	The antiserum was produced against synthesized peptide derived from human ADCY8. AA range:591-640
Mol wt	140122
Species reactivity	Human, Mouse, Rat
Clonality	Polyclonal
Recommended application	IHC-p, IF, ELISA
Concentration	1 mg/ml
Full name	A Cyclase VIII Antibody
Synonyms	ADCY8; Adenylate cyclase type 8; ATP pyrophosphate-lyase 8; Adenylate cyclase type VIII; Adenylyl cyclase 8; AC8; Ca(2+)/calmodulin-activated adenylyl cyclase

This product is for research use only, not for use in human, therapeutic or diagnostic procedure.

Background

Adenylate cyclase is a membrane bound enzyme that catalyses the formation of cyclic AMP from ATP. The enzymatic activity is under the control of several hormones, and different polypeptides participate in the transduction of the signal from the receptor to the catalytic moiety. Stimulatory or inhibitory receptors (Rs and Ri) interact with G proteins (Gs and Gi) that exhibit GTPase activity and they modulate the activity of the catalytic subunit of the adenylyl cyclase

Recommended Dilution

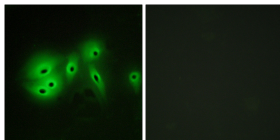
IHC: 1: 100 - 1: 300

IF: 1: 200 - 1: 1000

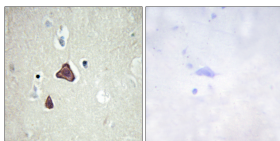
ELISA: 1: 40000

Not yet tested in other applications.

Images



Immunofluorescence analysis of A549 cells, using ADCY8 Antibody. The picture on the right is blocked with the synthesized peptide.



Immunohistochemistry analysis of paraffin-embedded human brain tissue, using ADCY8 Antibody. The picture on the right is blocked with the synthesized peptide.

Storage

-20°C for one year