

A20 Polyclonal Antibody

Description

Product type	Primary Antibody
Code	BT-AP00063
Host	Rabbit
Isotype	IgG
Size	20ul, 50ul, 100ul
Immunogen	Synthesized peptide derived from the Internal region of human A20.
Mol wt	94048
Species reactivity	Human
Clonality	Polyclonal
Recommended application	WB, ELISA
Concentration	1 mg/ml
Full name	A20 Antibody
Synonyms	ANKRD20A1; ANKRD20A; Ankyrin repeat domain-containing protein 20A1

This product is for research use only, not for use in human, therapeutic or diagnostic procedure.

Background

ANKRD20A1 (Ankyrin Repeat Domain 20 Family Member A1) is a Protein Coding gene. An important paralog of this gene is ANKRD18A.

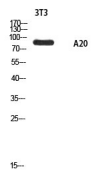
Recommended Dilution

WB: 1: 500 - 1: 2000

ELISA: 1: 10000

Not yet tested in other applications.

Images



Western blot analysis of 3T3 using A20 antibody. Secondary antibody was diluted at 1:20000

Storage

-20°C for one year

501 Changsheng S Rd, Nanhu Dist, Jiaxing, Zhejiang, China

Tel: 86 21 31007137 | E-mail: save@bt-laboratory.com | www.bt-laboratory.com