

## A20 Polyclonal Antibody

### Description

Product type	Primary Antibody
Code	BT-AP00064
Host	Rabbit
Isotype	IgG
Size	20ul, 50ul, 100ul
Immunogen	The antiserum was produced against synthesized peptide derived from human TNAP3. AA range:321-370
Mol wt	89614
Species reactivity	Human, Mouse
Clonality	Polyclonal
Recommended application	WB, IF, ELISA
Concentration	1 mg/ml
Full name	A20 Antibody
Synonyms	TNFAIP3; OTUD7C; Tumor necrosis factor alpha-induced protein 3; TNF alpha-induced protein 3; OTU domain-containing protein 7C; Putative DNA-binding protein A20; Zinc finger protein A20

This product is for research use only, not for use in human, therapeutic or diagnostic procedure.

### Background

TNFAIP3 was identified as a gene whose expression is rapidly induced by the tumor necrosis factor (TNF). TNF alpha induced protein 3 encoded by TNFAIP3 is a zinc finger protein and ubiquitin-editing enzyme, and has been shown to inhibit NF-kappa B activation as well as TNF-mediated apoptosis. The encoded protein, which has both ubiquitin ligase and deubiquitinase activities, is involved in the cytokine-mediated immune and inflammatory responses. Several transcript variants encoding the same protein have been found for TNFAIP3.

### Recommended Dilution

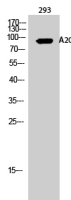
WB: 1: 500 - 1: 2000

IF: 1: 200 - 1: 1000

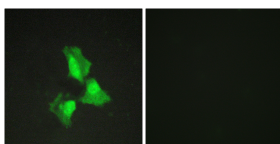
ELISA: 1: 20000

Not yet tested in other applications.

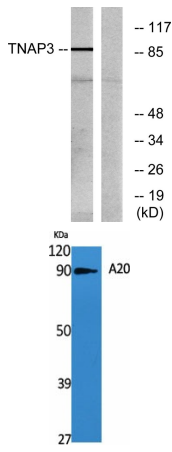
### Images



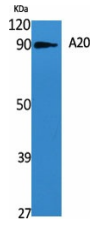
Western Blot analysis of 293 cells using A20 Polyclonal Antibody



Immunofluorescence analysis of HepG2 cells, using TNAP3 Antibody. The picture on the right is blocked with the synthesized peptide.



Western blot analysis of lysates from RAW264.7 cells, using TNAP3 Antibody. The lane on the right is blocked with the synthesized peptide.



Western Blot analysis of various cells using A20 Polyclonal Antibody

### Storage

-20°C for one year

501 Changsheng S Rd, Nanhu Dist, Jiaxing, Zhejiang, China

Tel: 86 21 31007137 | E-mail: [save@bt-laboratory.com](mailto:save@bt-laboratory.com) | [www.bt-laboratory.com](http://www.bt-laboratory.com)