

## AASS Polyclonal Antibody

### Description

<b>Product type</b>	Primary Antibody
<b>Code</b>	BT-AP00073
<b>Host</b>	Rabbit
<b>Isotype</b>	IgG
<b>Size</b>	20ul, 50ul, 100ul
<b>Immunogen</b>	The antiserum was produced against synthesized peptide derived from human AASS. AA range:251-300
<b>Mol wt</b>	102132
<b>Species reactivity</b>	Human
<b>Clonality</b>	Polyclonal
<b>Recommended application</b>	WB, ELISA
<b>Concentration</b>	1 mg/ml
<b>Full name</b>	AASS Antibody
<b>Synonyms</b>	AASS; Alpha-aminoadipic semialdehyde synthase; mitochondrial; LKR/SDH

This product is for research use only, not for use in human, therapeutic or diagnostic procedure.

### Background

AASS encodes a bifunctional enzyme (aminoadipate-semialdehyde synthase) that catalyzes the first two steps in the mammalian lysine degradation pathway. The N-terminal and the C-terminal portions of this enzyme contain lysine-ketoglutarate reductase and saccharopine dehydrogenase activity, respectively, resulting in the conversion of lysine to alpha-aminoadipic semialdehyde. Mutations in AASS are associated with familial hyperlysinemia.

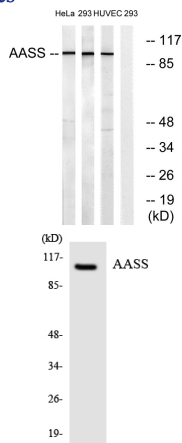
### Recommended Dilution

WB: 1: 500 - 1: 2000

ELISA: 1: 10000

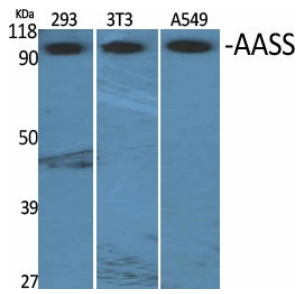
Not yet tested in other applications.

### Images

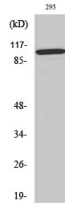


Western blot analysis of lysates from 293, HUVEC, and HeLa cells, using AASS Antibody. The lane on the right is blocked with the synthesized peptide.

Western blot analysis of the lysates from COLO205 cells using AASS antibody.



Western Blot analysis of various cells using AASS Polyclonal Antibody



Western Blot analysis of HeLa cells using AASS Polyclonal Antibody

### Storage

-20°C for one year

501 Changsheng S Rd, Nanhu Dist, Jiaxing, Zhejiang, China

Tel: 86 21 31007137 | E-mail: [save@bt-laboratory.com](mailto:save@bt-laboratory.com) | [www.bt-laboratory.com](http://www.bt-laboratory.com)