

## ABCA13 Polyclonal Antibody

### Description

<b>Product type</b>	Primary Antibody
<b>Code</b>	BT-AP00083
<b>Host</b>	Rabbit
<b>Isotype</b>	IgG
<b>Size</b>	20ul, 50ul, 100ul
<b>Immunogen</b>	The antiserum was produced against synthesized peptide derived from human ABCA13. AA range:2251-2300
<b>Mol wt</b>	576239
<b>Species reactivity</b>	Human
<b>Clonality</b>	Polyclonal
<b>Recommended application</b>	IF, ELISA
<b>Concentration</b>	1 mg/ml
<b>Full name</b>	ABCA13 Antibody
<b>Synonyms</b>	ABCA13; ATP-binding cassette sub-family A member 13

**This product is for research use only, not for use in human, therapeutic or diagnostic procedure.**

### Background

In human, the ATP-binding cassette (ABC) family of transmembrane transporters has at least 48 genes and 7 gene subfamilies. ABCA13 is a member of ABC gene subfamily A (ABCA). Genes within the ABCA family typically encode several thousand amino acids. Like other ABC transmembrane transporter proteins, this protein has 12 or more transmembrane alpha-helix domains that likely arrange to form a single central chamber with multiple substrate binding sites. It is also predicted to have two large extracellular domains and two nucleotide binding domains as is typical for ABCA proteins. Alternative splice variants have been described but their biological validity has not been demonstrated.

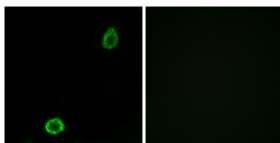
### Recommended Dilution

IF: 1: 200 - 1: 1000

ELISA: 1: 40000

Not yet tested in other applications.

### Images



Immunofluorescence analysis of A549 cells, using ABCA13 Antibody. The picture on the right is blocked with the synthesized peptide.

### Storage

-20°C for one year