

ABCA6 Polyclonal Antibody

Description

Product type	Primary Antibody
Code	BT-AP00087
Host	Rabbit
Isotype	IgG
Size	20ul, 50ul, 100ul
Immunogen	Synthesized peptide derived from ABCA6 . at AA range: 1180-1260
Mol wt	184286
Species reactivity	Human
Clonality	Polyclonal
Recommended application	WB, ELISA
Concentration	1 mg/ml
Full name	ABCA6 Antibody
Synonyms	ABCA6; ATP-binding cassette sub-family A member 6

This product is for research use only, not for use in human, therapeutic or diagnostic procedure.

Background

The membrane-associated protein encoded by ABCA6 is a member of the superfamily of ATP-binding cassette (ABC) transporters. ABC proteins transport various molecules across extra- and intracellular membranes. ABC genes are divided into seven distinct subfamilies (ABC1, MDR/TAP, MRP, ALD, OABP, GCN20, and White). This encoded protein (ATP binding cassette subfamily A member 6) is a member of the ABC1 subfamily. Members of the ABC1 subfamily comprise the only major ABC subfamily found exclusively in multicellular eukaryotes. ABCA6 is clustered among 4 other ABC1 family members on 17q24 and may play a role in macrophage lipid homeostasis.

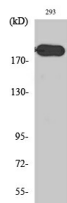
Recommended Dilution

WB: 1: 500 - 1: 2000

ELISA: 1: 40000

Not yet tested in other applications.

Images



Western Blot analysis of various cells using ABCA6 Polyclonal Antibody

Storage

-20°C for one year