

ABCB10 Polyclonal Antibody

Description

Product type	Primary Antibody
Code	BT-AP00093
Host	Rabbit
Isotype	IgG
Size	20ul, 50ul, 100ul
Immunogen	The antiserum was produced against synthesized peptide derived from human ABCB10. AA range:441-490
Mol wt	79148
Species reactivity	Human
Clonality	Polyclonal
Recommended application	WB, IHC-p, IF, ELISA
Concentration	1 mg/ml
Full name	ABCB10 Antibody
Synonyms	ABCB10; ATP-binding cassette sub-family B member 10; mitochondrial; ATP-binding cassette transporter 10; ABC transporter 10 protein; Mitochondrial ATP-binding cassette 2; M-ABC2

This product is for research use only, not for use in human, therapeutic or diagnostic procedure.

Background

The membrane-associated protein encoded by ABCB10 is a member of the superfamily of ATP-binding cassette (ABC) transporters. ABC proteins transport various molecules across extra- and intra-cellular membranes. ABC genes are divided into seven distinct subfamilies (ABC1, MDR/TAP, MRP, ALD, OABP, GCN20, White). ATP binding cassette subfamily B member 10 is a member of the MDR/TAP subfamily. Members of the MDR/TAP subfamily are involved in multidrug resistance. The function of this mitochondrial protein is unknown.

Recommended Dilution

WB: 1: 500 - 1: 2000

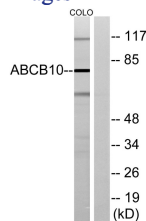
IHC: 1: 100 - 1: 300

IF: 1: 200 - 1: 1000

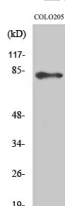
ELISA: 1: 40000

Not yet tested in other applications.

Images



Western blot analysis of lysates from COLO cells, using ABCB10 Antibody. The lane on the right is blocked with the synthesized peptide.



Western Blot analysis of various cells using ABCB10 Polyclonal Antibody

Storage

-20°C for one year

501 Changsheng S Rd, Nanhu Dist, Jiaxing, Zhejiang, China

Tel: 86 21 31007137 | E-mail: save@bt-laboratory.com | www.bt-laboratory.com