

ABCC12 Polyclonal Antibody

Description

Product type	Primary Antibody
Code	BT-AP00097
Host	Rabbit
Isotype	IgG
Size	20ul, 50ul, 100ul
Immunogen	The antiserum was produced against synthesized peptide derived from human MRP9. AA range:691-740
Mol wt	152297
Species reactivity	Human
Clonality	Polyclonal
Recommended application	WB, ELISA
Concentration	1 mg/ml
Full name	ABCC12 Antibody
Synonyms	ABCC12; MRP9; Multidrug resistance-associated protein 9; ATP-binding cassette sub-family C member 12

This product is for research use only, not for use in human, therapeutic or diagnostic procedure.

Background

ABCC12 is a member of the superfamily of ATP-binding cassette (ABC) transporters and the encoded protein (ATP binding cassette subfamily C member 12) contains two ATP-binding domains and 12 transmembrane regions. ABC proteins transport various molecules across extra- and intracellular membranes. ABC genes are divided into seven distinct subfamilies: ABC1, MDR/TAP, MRP, ALD, OABP, GCN20, and White. ABCC12 is a member of the MRP subfamily which is involved in multi-drug resistance. ABCC12 and another subfamily member are arranged head-to-tail on chromosome 16q12.1. Increased expression of ABCC12 is associated with breast cancer.

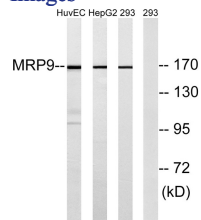
Recommended Dilution

WB: 1: 500 - 1: 2000

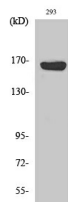
ELISA: 1: 20000

Not yet tested in other applications.

Images



Western blot analysis of lysates from 293, HepG2, and HUVEC cells, using MRP9 Antibody. The lane on the right is blocked with the synthesized peptide.



Western Blot analysis of various cells using ABCC12 Polyclonal Antibody diluted at 1:500

Storage

-20°C for one year

501 Changsheng S Rd, Nanhu Dist, Jiaxing, Zhejiang, China

Tel: 86 21 31007137 | E-mail: save@bt-laboratory.com | www.bt-laboratory.com