

ABCC13 Polyclonal Antibody

Description

Product type	Primary Antibody
Code	BT-AP00098
Host	Rabbit
Isotype	IgG
Size	20ul, 50ul, 100ul
Immunogen	The antiserum was produced against synthesized peptide derived from human ABCC13. AA range:56-105
Mol wt	30831
Species reactivity	Human
Clonality	Polyclonal
Recommended application	WB, IHC-p, ELISA
Concentration	1 mg/ml
Full name	ABCC13 Antibody
Synonyms	ABCC13; C21orf73; PRED6; Putative ATP-binding cassette sub-family C member 13

This product is for research use only, not for use in human, therapeutic or diagnostic procedure.

Background

ABCC13 is a member of the superfamily of genes encoding ATP-binding cassette (ABC) transporters. ABC proteins transport various molecules across extra- and intra-cellular membranes. ABC genes are divided into seven distinct subfamilies (ABC1, MDR/TAP, MRP, ALD, OABP, GCN20, and White). This family member is part of the MRP subfamily, which is involved in multi-drug resistance, but the human locus is now thought to be a pseudogene incapable of encoding a functional ABC protein. Alternative splicing results in multiple transcript variants; however, not all variants have been fully described.

Recommended Dilution

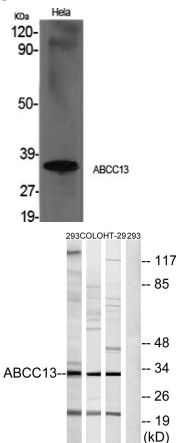
WB: 1: 500 - 1: 2000

IHC: 1: 100 - 1: 300

ELISA: 1: 40000

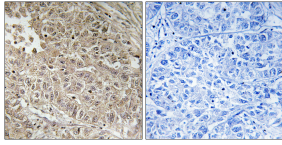
Not yet tested in other applications.

Images

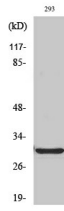


Western Blot analysis of various cells using ABCC13 Polyclonal Antibody cells nucleus.

Western blot analysis of lysates from 293, COLO, and HT-29 cells, using ABCC13 Antibody. The lane on the right is blocked with the synthesized peptide.



Immunohistochemistry analysis of paraffin-embedded human liver carcinoma tissue, using ABCC13 Antibody. The picture on the right is blocked with the synthesized peptide.



Western Blot analysis of HT29 cells using ABCC13 Polyclonal Antibody cells nucleus.

Storage

-20°C for one year

501 Changsheng S Rd, Nanhu Dist, Jiaxing, Zhejiang, China

Tel: 86 21 31007137 | E-mail: save@bt-laboratory.com | www.bt-laboratory.com