

ABCF2 Polyclonal Antibody

Description

| | |
|--------------------------------|---|
| Product type | Primary Antibody |
| Code | BT-AP00107 |
| Host | Rabbit |
| Isotype | IgG |
| Size | 20ul, 50ul, 100ul |
| Immunogen | The antiserum was produced against synthesized peptide derived from human ABCF2. AA range:171-220 |
| Mol wt | 71290 |
| Species reactivity | Human, Mouse, Rat |
| Clonality | Polyclonal |
| Recommended application | WB, ELISA |
| Concentration | 1 mg/ml |
| Full name | ABCF2 Antibody |
| Synonyms | ABCF2; HUSSY-18; ATP-binding cassette sub-family F member 2; Iron-inhibited ABC transporter 2 |

This product is for research use only, not for use in human, therapeutic or diagnostic procedure.

Background

ABCF2 encodes a member of the ATP-binding cassette (ABC) transporter superfamily. ATP-binding cassette proteins transport various molecules across extra- and intracellular membranes. Alterations in ABCF2 may be involved in cancer progression. Alternative splicing results in multiple transcript variants. Related pseudogenes have been identified on chromosomes 3 and 7.

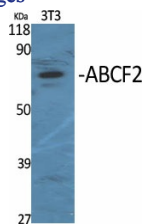
Recommended Dilution

WB: 1: 500 - 1: 2000

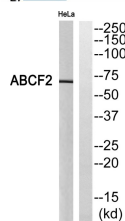
ELISA: 1: 5000

Not yet tested in other applications.

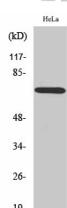
Images



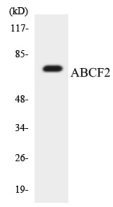
Western Blot analysis of various cells using ABCF2 Polyclonal Antibody



Western blot analysis of ABCF2 Antibody. The lane on the right is blocked with the ABCF2 peptide.



Western Blot analysis of HeLa cells using ABCF2 Polyclonal Antibody



Western blot analysis of the lysates from HepG2 cells using ABCF2 antibody.

Storage

-20°C for one year

501 Changsheng S Rd, Nanhu Dist, Jiaxing, Zhejiang, China

Tel: 86 21 31007137 | E-mail: save@bt-laboratory.com | www.bt-laboratory.com