

ABHD11 Polyclonal Antibody

Description

Product type	Primary Antibody
Code	BT-AP00115
Host	Rabbit
Isotype	IgG
Size	20ul, 50ul, 100ul
Immunogen	The antiserum was produced against synthesized peptide derived from human ABHD11. AA range:161-210
Mol wt	34690
Species reactivity	Human
Clonality	Polyclonal
Recommended application	WB, ELISA
Concentration	1 mg/ml
Full name	ABHD11 Antibody
Synonyms	ABHD11; WBSCR21; PP1226; Abhydrolase domain-containing protein 11; Williams-Beuren syndrome chromosomal region 21 protein

This product is for research use only, not for use in human, therapeutic or diagnostic procedure.

Background

ABHD11 encodes a protein (abhydrolase domain containing 11) containing an alpha/beta hydrolase fold domain. ABHD11 is deleted in Williams syndrome, a multisystem developmental disorder caused by the deletion of contiguous genes at 7q11.23.

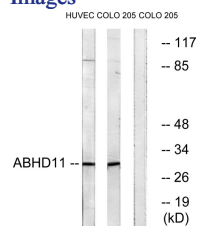
Recommended Dilution

WB: 1: 500 - 1: 2000

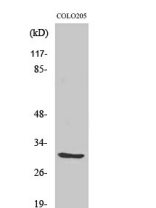
ELISA: 1: 20000

Not yet tested in other applications.

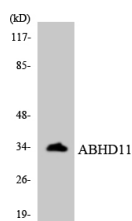
Images



Western blot analysis of lysates from COLO and HUVEC cells, using ABHD11 Antibody. The lane on the right is blocked with the synthesized peptide.



Western Blot analysis of various cells using ABHD11 Polyclonal Antibody



Western blot analysis of the lysates from HeLa cells using ABHD11 antibody.

Storage

-20°C for one year

501 Changsheng S Rd, Nanhu Dist, Jiaxing, Zhejiang, China

Tel: 86 21 31007137 | E-mail: save@bt-laboratory.com | www.bt-laboratory.com