

## ABHD2 Polyclonal Antibody

### Description

<b>Product type</b>	Primary Antibody
<b>Code</b>	BT-AP00120
<b>Host</b>	Rabbit
<b>Isotype</b>	IgG
<b>Size</b>	20ul, 50ul, 100ul
<b>Immunogen</b>	The antiserum was produced against synthesized peptide derived from human ABHD2. AA range:251-300
<b>Mol wt</b>	48315
<b>Species reactivity</b>	Human, Mouse
<b>Clonality</b>	Polyclonal
<b>Recommended application</b>	WB, IF, ELISA
<b>Concentration</b>	1 mg/ml
<b>Full name</b>	ABHD2 Antibody
<b>Synonyms</b>	ABHD2; LABH2; Abhydrolase domain-containing protein 2; Lung alpha/beta hydrolase 2; Protein PHPS1-2

This product is for research use only, not for use in human, therapeutic or diagnostic procedure.

### Background

ABHD2 encodes a protein (abhydrolase domain containing 2) containing an alpha/beta hydrolase fold, which is a catalytic domain found in a very wide range of enzymes. The function of this protein has not been determined. Alternative splicing of this gene results in two transcript variants encoding the same protein.

### Recommended Dilution

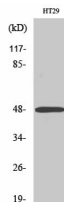
WB: 1: 500 - 1: 2000

IF: 1: 200 - 1: 1000

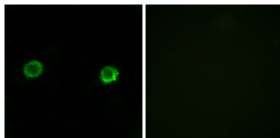
ELISA: 1: 40000

Not yet tested in other applications.

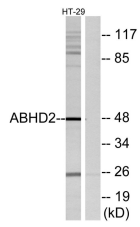
### Images



Western Blot analysis of various cells using ABHD2 Polyclonal Antibody



Immunofluorescence analysis of MCF-7 cells, using ABHD2 Antibody. The picture on the right is blocked with the synthesized peptide.



Western blot analysis of lysates from HT29 cells, using ABHD2 Antibody. The lane on the right is blocked with the synthesized peptide.

### Storage

-20°C for one year

501 Changsheng S Rd, Nanhu Dist, Jiaxing, Zhejiang, China

Tel: 86 21 31007137 | E-mail: [save@bt-laboratory.com](mailto:save@bt-laboratory.com) | [www.bt-laboratory.com](http://www.bt-laboratory.com)