

ABHD7 Polyclonal Antibody

Description

Product type	Primary Antibody
Code	BT-AP00124
Host	Rabbit
Isotype	IgG
Size	20ul, 50ul, 100ul
Immunogen	The antiserum was produced against synthesized peptide derived from human ABHD7. AA range:101-150
Mol wt	42324
Species reactivity	Human, Mouse
Clonality	Polyclonal
Recommended application	WB, ELISA
Concentration	1 mg/ml
Full name	ABHD7 Antibody
Synonyms	EPHX4; ABHD7; EPHXRP; Epoxide hydrolase 4; Abhydrolase domain-containing protein 7; Epoxide hydrolase-related protein

This product is for research use only, not for use in human, therapeutic or diagnostic procedure.

Background

The α/β hydrolase superfamily comprise diverse members that are involved in important biochemical processes and related to various diseases. They have unrelated sequences, various substrates, and different kinds of catalytic activities, yet they share the same canonical α/β hydrolase fold, which consists of an eight-stranded parallel α/β structure. They are also characterized by a catalytic triad composed of a histidine, an acid and a nucleophile. Members of this superfamily are often drug targets for treating diseases, such as diabetes, Alzheimer's disease, obesity and blood clotting disorders. The Ab hydrolase domain containing (ABHD) gene subfamily is comprised of 15 mostly uncharacterized members, most of which utilize a serine nucleophile to form the G-X-S-X-G nucleophile elbow. ABHD7 is a 362 amino acid single-pass type II membrane protein that belongs to the AB hydrolase superfamily and the Epoxide hydrolase family.

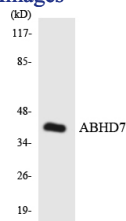
Recommended Dilution

WB: 1: 500 - 1: 2000

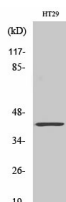
ELISA: 1: 40000

Not yet tested in other applications.

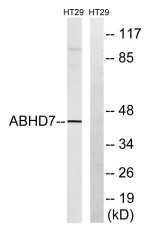
Images



Western blot analysis of the lysates from HeLa cells using ABHD7 antibody.



Western Blot analysis of various cells using ABHD7 Polyclonal Antibody diluted at 1:500



Western blot analysis of lysates from HT-29 cells, using ABHD7 Antibody. The lane on the right is blocked with the synthesized peptide.

Storage

-20°C for one year

501 Changsheng S Rd, Nanhu Dist, Jiaxing, Zhejiang, China

Tel: 86 21 31007137 | E-mail: save@bt-laboratory.com | www.bt-laboratory.com