

## ABHD9 Polyclonal Antibody

### Description

Product type	Primary Antibody
Code	BT-AP00126
Host	Rabbit
Isotype	IgG
Size	20ul, 50ul, 100ul
Immunogen	The antiserum was produced against synthesized peptide derived from human ABHD9. AA range:101-150
Mol wt	40909
Species reactivity	Human
Clonality	Polyclonal
Recommended application	WB, IHC-p, ELISA
Concentration	1 mg/ml
Full name	ABHD9 Antibody
Synonyms	EPHX3; ABHD9; Epoxide hydrolase 3; Abhydrolase domain-containing protein 9

This product is for research use only, not for use in human, therapeutic or diagnostic procedure.

### Background

EPHX3 (Epoxide Hydrolase 3) is a Protein Coding gene. GO annotations related to this gene include hydrolase activity. An important paralog of this gene is EPHX4.

### Recommended Dilution

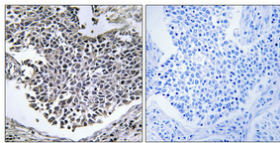
WB: 1: 500 - 1: 2000

IHC: 1: 100 - 1: 300

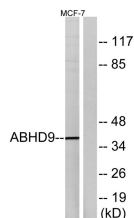
ELISA: 1: 40000

Not yet tested in other applications.

### Images



Immunohistochemical analysis of paraffin-embedded Human lung cancer. Antibody was diluted at 1:100(4° overnight). High-pressure and temperature Tris-EDTA,pH8.0 was used for antigen retrieval. Negative contrl (right) obtained from antibody was pre-absorbed by immunogen peptide.



Western blot analysis of lysates from MCF-7 cells, using ABHD9 Antibody. The lane on the right is blocked with the synthesized peptide.

### Storage

-20°C for one year