

Abi-1 Polyclonal Antibody

Description

Product type	Primary Antibody
Code	BT-AP00129
Host	Rabbit
Isotype	IgG
Size	20ul, 50ul, 100ul
Immunogen	The antiserum was produced against synthesized peptide derived from human Abi-1. AA range:152-201
Mol wt	55081
Species reactivity	Human, Mouse, Rat
Clonality	Polyclonal
Recommended application	WB, ELISA
Concentration	1 mg/ml
Full name	Abi-1 Antibody
Synonyms	ABI1; SSH3BP1; Abl interactor 1; Abelson interactor 1; Abi-1; Abl-binding protein 4; AblBP4; Eps8 SH3 domain-binding protein; Eps8-binding protein; Nap1-binding protein; Nap1BP; Spectrin SH3 domain-bi

This product is for research use only, not for use in human, therapeutic or diagnostic procedure.

Background

ABI1 encodes a member of the Abelson-interactor family of adaptor proteins. These proteins facilitate signal transduction as components of several multiprotein complexes, and regulate actin polymerization and cytoskeletal remodeling through interactions with Abelson tyrosine kinases. The encoded protein (abl interactor 1) plays a role in macropinocytosis as a component of the WAVE2 complex, and also forms a complex with EPS8 and SOS1 that mediates signal transduction from Ras to Rac. This gene may play a role in the progression of several malignancies including melanoma, colon cancer and breast cancer, and a t (10;11) chromosomal translocation involving this gene and the MLL gene has been associated with acute myeloid leukemia. Alternatively spliced transcript variants encoding multiple isoforms have been observed for this gene, and a pseudogene of this gene is located on the long arm of chromosome 14.

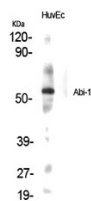
Recommended Dilution

WB: 1: 500 - 1: 2000

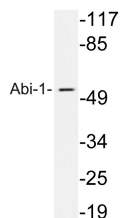
ELISA: 1: 40000

Not yet tested in other applications.

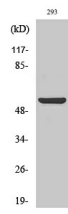
Images



Western Blot analysis of various cells using Abi-1 Polyclonal Antibody



Western blot analysis of lysates from 293 cells treated with TNF, using Abi-1 antibody.



Western Blot analysis of 293 cells using Abi-1 Polyclonal Antibody

Storage

-20°C for one year

501 Changsheng S Rd, Nanhu Dist, Jiaxing, Zhejiang, China

Tel: 86 21 31007137 | E-mail: save@bt-laboratory.com | www.bt-laboratory.com