

Ab11/2 Polyclonal Antibody

Description

Product type	Primary Antibody
Code	BT-AP00135
Host	Rabbit
Isotype	IgG
Size	20ul, 50ul, 100ul
Immunogen	The antiserum was produced against synthesized peptide derived from human c-Abl. AA range:406-455
Mol wt	122873
Species reactivity	Human, Mouse
Clonality	Polyclonal
Recommended application	WB, IHC-p, ELISA
Concentration	1 mg/ml
Full name	Ab11/2 Antibody
Synonyms	ABL1; ABL; JTK7; Tyrosine-protein kinase ABL1; Abelson murine leukemia viral oncogene homolog 1; Abelson tyrosine-protein kinase 1; Proto-oncogene c-Abl; p150; ABL2; ABL; ARG; Abelson tyrosine-protein

This product is for research use only, not for use in human, therapeutic or diagnostic procedure.

Background

ABL1 is a protooncogene that encodes a protein tyrosine kinase (ABL proto-oncogene 1, non-receptor tyrosine kinase) involved in a variety of cellular processes, including cell division, adhesion, differentiation, and response to stress. The activity of the protein is negatively regulated by its SH3 domain, whereby deletion of the region encoding this domain results in an oncogene. The ubiquitously expressed protein has DNA-binding activity that is regulated by CDC2-mediated phosphorylation, suggesting a cell cycle function. ABL1 has been found fused to a variety of translocation partner genes in various leukemias, most notably the t(9;22) translocation that results in a fusion with the 5' end of the breakpoint cluster region gene (BCR; MIM:151410). Alternative splicing of this gene results in two transcript variants, which contain alternative first exons that are spliced to the remaining common exons.

Recommended Dilution

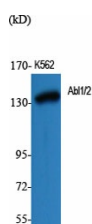
WB: 1: 500 - 1: 2000

IHC: 1: 100 - 1: 300

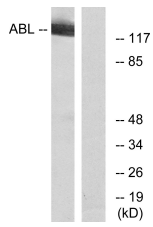
ELISA: 1: 20000

Not yet tested in other applications.

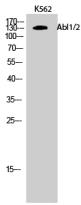
Images



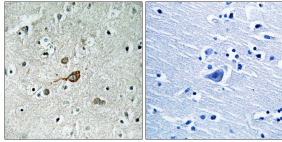
Western Blot analysis of various cells using Ab11/2 Polyclonal Antibody



Western blot analysis of lysates from RAW264.7 cells, using c-Abl Antibody. The lane on the right is blocked with the synthesized peptide.



Western Blot analysis of K562 cells using Abl1/2 Polyclonal Antibody



Immunohistochemistry analysis of paraffin-embedded human brain tissue, using c-Abl Antibody. The picture on the right is blocked with the synthesized peptide.

Storage

-20°C for one year

501 Changsheng S Rd, Nanhu Dist, Jiaxing, Zhejiang, China

Tel: 86 21 31007137 | E-mail: save@bt-laboratory.com | www.bt-laboratory.com