

ACE1 Polyclonal Antibody

Description

Product type	Primary Antibody
Code	BT-AP00152
Host	Rabbit
Isotype	IgG
Size	20ul, 50ul, 100ul
Immunogen	Synthetic peptide from human protein at AA range: 41-90
Mol wt	265554
Species reactivity	Human, Mouse
Clonality	Polyclonal
Recommended application	IHC-p, ELISA
Concentration	1 mg/ml
Full name	ACE1 Antibody
Synonyms	Angiotensin-converting enzyme (ACE) (EC 3.2.1.-) (EC 3.4.15.1) (Dipeptidyl carboxypeptidase I) (Kininase II) (CD antigen CD143) [Cleaved into: Angiotensin-converting enzyme, soluble form]

This product is for research use only, not for use in human, therapeutic or diagnostic procedure.

Background

Acetyl-CoA carboxylase (ACC) is a complex multifunctional enzyme system. ACC is a biotin-containing enzyme which catalyzes the carboxylation of acetyl-CoA to malonyl-CoA, the rate-limiting step in fatty acid synthesis. There are two ACC forms, alpha and beta, encoded by two different genes. ACC-alpha is highly enriched in lipogenic tissues. The enzyme is under long term control at the transcriptional and translational levels and under short term regulation by the phosphorylation/dephosphorylation of targeted serine residues and by allosteric transformation by citrate or palmitoyl-CoA. Multiple alternatively spliced transcript variants divergent in the 5' sequence and encoding distinct isoforms have been found for ACACA.

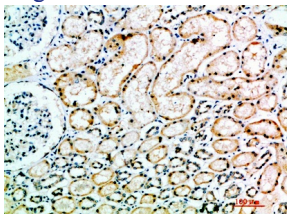
Recommended Dilution

IHC-p: 1: 50 - 200

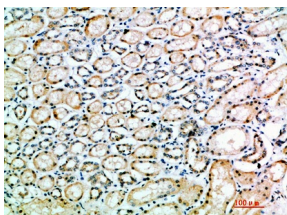
ELISA: 1: 10000 - 20000

Not yet tested in other applications.

Images



Immunohistochemical analysis of paraffin-embedded human-kidney, antibody was diluted at 1:200



Immunohistochemical analysis of paraffin-embedded human-kidney, antibody was diluted at 1:200

Storage

-20°C for one year

501 Changsheng S Rd, Nanhu Dist, Jiaxing, Zhejiang, China

Tel: 86 21 31007137 | E-mail: save@bt-laboratory.com | www.bt-laboratory.com