

## AChR Alpha1 Polyclonal Antibody

### Description

<b>Product type</b>	Primary Antibody
<b>Code</b>	BT-AP00170
<b>Host</b>	Rabbit
<b>Isotype</b>	IgG
<b>Size</b>	20ul, 50ul, 100ul
<b>Immunogen</b>	The antiserum was produced against synthesized peptide derived from human AChRalpha1. AA range:168-217
<b>Mol wt</b>	54546
<b>Species reactivity</b>	Human, Mouse, Rat
<b>Clonality</b>	Polyclonal
<b>Recommended application</b>	IHC-p, ELISA
<b>Concentration</b>	1 mg/ml
<b>Full name</b>	AChRalpha1 Antibody
<b>Synonyms</b>	CHRNA1; ACHRA; CHNRA; Acetylcholine receptor subunit alpha

**This product is for research use only, not for use in human, therapeutic or diagnostic procedure.**

### Background

The muscle acetylcholine receptor consists of 5 subunits of 4 different types: 2 alpha subunits and 1 each of the beta, gamma, and delta subunits. CHRNA1 encodes an alpha subunit that plays a role in acetylcholine binding/channel gating. Alternatively spliced transcript variants encoding different isoforms have been identified.

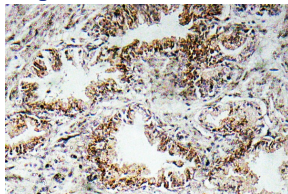
### Recommended Dilution

IHC: 1: 100 - 1: 300

ELISA: 1: 10000

Not yet tested in other applications.

### Images



Immunohistochemistry analysis of AChR $\alpha$ 1 antibody in paraffin-embedded human prostate carcinoma tissue.

### Storage

-20°C for one year