

AChR Alpha1 Polyclonal Antibody

Description

| | |
|--------------------------------|---|
| Product type | Primary Antibody |
| Code | BT-AP00171 |
| Host | Rabbit |
| Isotype | IgG |
| Size | 20ul, 50ul, 100ul |
| Immunogen | The antiserum was produced against synthesized peptide derived from the Internal region of human CHRNA1. AA range:171-220 |
| Mol wt | 54546 |
| Species reactivity | Human, Mouse, Rat |
| Clonality | Polyclonal |
| Recommended application | WB, ELISA |
| Concentration | 1 mg/ml |
| Full name | AChRalpha1 Antibody |
| Synonyms | CHRNA1; ACHRA; CHNRA; Acetylcholine receptor subunit alpha |

This product is for research use only, not for use in human, therapeutic or diagnostic procedure.

Background

The muscle acetylcholine receptor consists of 5 subunits of 4 different types: 2 alpha subunits and 1 each of the beta, gamma, and delta subunits. CHRNA1 encodes an alpha subunit that plays a role in acetylcholine binding/channel gating. Alternatively spliced transcript variants encoding different isoforms have been identified.

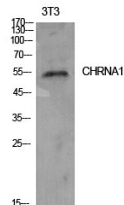
Recommended Dilution

WB: 1: 500 - 1: 2000

ELISA: 1: 10000

Not yet tested in other applications.

Images



Western Blot analysis of NIH-3T3 cells using AChR α 1 Polyclonal Antibody. Secondary antibody was diluted at 1:20000

Storage

-20°C for one year