

AChR Alpha3 Polyclonal Antibody

Description

Product type	Primary Antibody
Code	BT-AP00173
Host	Rabbit
Isotype	IgG
Size	20ul, 50ul, 100ul
Immunogen	The antiserum was produced against synthesized peptide derived from human AChRalpha3. AA range:90-139
Mol wt	57310
Species reactivity	Human, Mouse, Rat
Clonality	Polyclonal
Recommended application	WB, ELISA
Concentration	1 mg/ml
Full name	AChRalpha3 Antibody
Synonyms	CHRNA3; NACHRA3; Neuronal acetylcholine receptor subunit alpha-3

This product is for research use only, not for use in human, therapeutic or diagnostic procedure.

Background

CHRNA3 encodes a member of the nicotinic acetylcholine receptor family of proteins. Members of this family of proteins form pentameric complexes comprised of both alpha and beta subunits. CHRNA3 encodes an alpha-type subunit, as it contains characteristic adjacent cysteine residues. The encoded protein (cholinergic receptor nicotinic alpha 3 subunit) is a ligand-gated ion channel that likely plays a role in neurotransmission. Polymorphisms in this gene have been associated with an increased risk of smoking initiation and an increased susceptibility to lung cancer. Alternatively spliced transcript variants have been described.

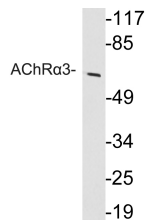
Recommended Dilution

WB: 1: 500 - 1: 2000

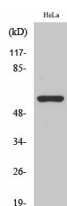
ELISA: 1: 10000

Not yet tested in other applications.

Images



Western blot analysis of lysate from HeLa cells, using AChR α 3 antibody.



Western Blot analysis of various cells using AChR α 3 Polyclonal Antibody

Storage

-20°C for one year

501 Changsheng S Rd, Nanhu Dist, Jiaxing, Zhejiang, China

Tel: 86 21 31007137 | E-mail: save@bt-laboratory.com | www.bt-laboratory.com