

ACOT1 Polyclonal Antibody

Description

Product type	Primary Antibody
Code	BT-AP00185
Host	Rabbit
Isotype	IgG
Size	20ul, 50ul, 100ul
Immunogen	The antiserum was produced against synthesized peptide derived from human ACOT1. AA range:91-140
Mol wt	46277
Species reactivity	Human
Clonality	Polyclonal
Recommended application	WB, IHC-p, IF, ELISA
Concentration	1 mg/ml
Full name	ACOT1 Antibody
Synonyms	ACOT1; CTE1; Acyl-coenzyme A thioesterase 1; Acyl-CoA thioesterase 1; CTE-I; CTE-Ib; Inducible cytosolic acyl-coenzyme A thioester hydrolase; Long chain acyl-CoA thioester hydrolase; Long chain acyl-C

This product is for research use only, not for use in human, therapeutic or diagnostic procedure.

Background

ACOT1 (Acyl-CoA Thioesterase 1) is a Protein Coding gene. Diseases associated with ACOT1 include human immunodeficiency virus infectious disease. Among its related pathways are Fatty Acyl-CoA Biosynthesis and Metabolism. GO annotations related to this gene include hydrolase activity and palmitoyl-CoA hydrolase activity. An important paralog of this gene is ACOT2.

Recommended Dilution

WB: 1: 500 - 1: 2000

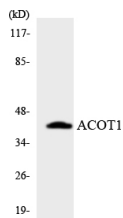
IHC: 1: 100 - 1: 300

IF: 1: 200 - 1: 1000

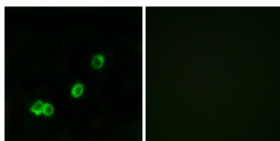
ELISA: 1: 40000

Not yet tested in other applications.

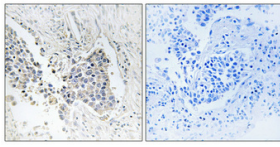
Images



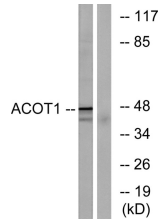
Western blot analysis of the lysates from HT-29 cells using ACOT1 antibody.



Immunofluorescence analysis of MCF7 cells, using ACOT1 Antibody. The picture on the right is blocked with the synthesized peptide.



Immunohistochemical analysis of paraffin-embedded Human lung cancer. Antibody was diluted at 1:100(4° overnight). High-pressure and temperature Tris-EDTA,pH8.0 was used for antigen retrieval. Negative control (right) obtained from antibody was pre-absorbed by immunogen peptide.



Western blot analysis of lysates from Jurkat cells, using ACOT1 Antibody. The lane on the right is blocked with the synthesized peptide.

Storage

-20°C for one year

501 Changsheng S Rd, Nanhu Dist, Jiaxing, Zhejiang, China

Tel: 86 21 31007137 | E-mail: save@bt-laboratory.com | www.bt-laboratory.com