

ACOT2 Polyclonal Antibody

Description

Product type	Primary Antibody
Code	BT-AP00187
Host	Rabbit
Isotype	IgG
Size	20ul, 50ul, 100ul
Immunogen	The antiserum was produced against synthesized peptide derived from human ACOT2. AA range:171-220
Mol wt	53238
Species reactivity	Human
Clonality	Polyclonal
Recommended application	WB, IHC-p, IF, ELISA
Concentration	1 mg/ml
Full name	ACOT2 Antibody
Synonyms	ACOT2; PTE2; PTE2A; Acyl-coenzyme A thioesterase 2; mitochondrial; Acyl-CoA thioesterase 2; Acyl-coenzyme A thioester hydrolase 2a; CTE-Ia; Long-chain acyl-CoA thioesterase 2; ZAP128

This product is for research use only, not for use in human, therapeutic or diagnostic procedure.

Background

ACOT2 encodes a member of the acyl-CoA thioesterase protein family, and is one of four acyl-CoA hydrolase genes located in a cluster on chromosome 14. Alternative splicing results in multiple transcript variants.

Recommended Dilution

WB: 1: 500 - 1: 2000

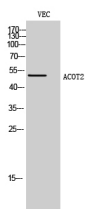
IHC: 1: 100 - 1: 300

IF: 1: 200 - 1: 1000

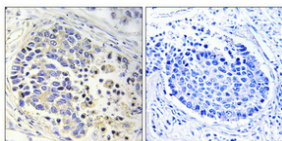
ELISA: 1: 40000

Not yet tested in other applications.

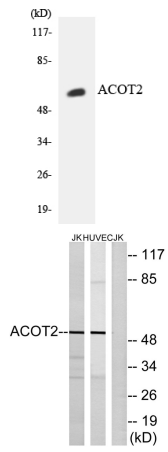
Images



Western Blot analysis of VEC cells using ACOT2 Polyclonal Antibody diluted at 1:500



Immunohistochemical analysis of paraffin-embedded Human lung cancer. Antibody was diluted at 1:100(4° overnight). High-pressure and temperature Tris-EDTA,pH8.0 was used for antigen retrieval. Negative contrl (right) obtaned from antibody was pre-absorbed by immunogen peptide.



Western blot analysis of the lysates from HepG2 cells using ACOT2 antibody.

Western blot analysis of lysates from Jurkat and HUVEC cells, using ACOT2 Antibody. The lane on the right is blocked with the synthesized peptide.

Storage

-20°C for one year

501 Changsheng S Rd, Nanhu Dist, Jiaxing, Zhejiang, China

Tel: 86 21 31007137 | E-mail: save@bt-laboratory.com | www.bt-laboratory.com