

ACOT4 Polyclonal Antibody

Description

Product type	Primary Antibody
Code	BT-AP00188
Host	Rabbit
Isotype	IgG
Size	20ul, 50ul, 100ul
Immunogen	The antiserum was produced against synthesized peptide derived from human ACOT4. AA range:361-410
Mol wt	46327
Species reactivity	Human
Clonality	Polyclonal
Recommended application	WB, IHC-p, IF, ELISA
Concentration	1 mg/ml
Full name	ACOT4 Antibody
Synonyms	ACOT4; PTE2B; PTE1B; Acyl-coenzyme A thioesterase 4; Acyl-CoA thioesterase 4; PTE-2b; Peroxisomal acyl coenzyme A thioester hydrolase Ib; Peroxisomal long-chain acyl-CoA thioesterase Ib; PTE-Ib

This product is for research use only, not for use in human, therapeutic or diagnostic procedure.

Background

Acyl-coenzyme A thioesterase 4 is an enzyme encoded by the ACOT4 gene in humans and is mapped to chromosome 14. In peroxisomes, it helps in β -oxidation of dicarboxylic acids to form succinate. ACOT4 is also responsible for the termination of β -oxidation of dicarboxylic acids of medium-chain length with the concomitant release of the corresponding free acids.

Recommended Dilution

WB: 1: 500 - 1: 2000

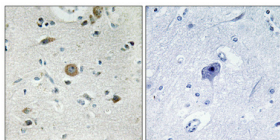
IHC: 1: 100 - 1: 300

IF: 1: 200 - 1: 1000

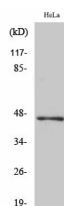
ELISA: 1: 20000

Not yet tested in other applications.

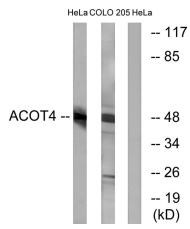
Images



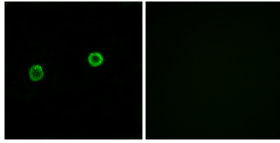
Immunohistochemical analysis of paraffin-embedded Human brain. Antibody was diluted at 1:100 (4° overnight). High-pressure and temperature Tris-EDTA, pH 8.0 was used for antigen retrieval. Negative control (right) obtained from antibody was pre-absorbed by immunogen peptide.



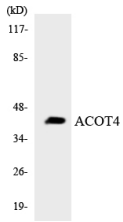
Western Blot analysis of various cells using ACOT4 Polyclonal Antibody diluted at 1:1000



Western blot analysis of lysates from HeLa and COLO cells, using ACOT4 Antibody. The lane on the right is blocked with the synthesized peptide.



Immunofluorescence analysis of MCF7 cells, using ACOT4 Antibody. The picture on the right is blocked with the synthesized peptide.



Western blot analysis of the lysates from COLO205 cells using ACOT4 antibody.

Storage

-20°C for one year

501 Changsheng S Rd, Nanhu Dist, Jiaxing, Zhejiang, China

Tel: 86 21 31007137 | E-mail: save@bt-laboratory.com | www.bt-laboratory.com