

## ACOT8 Polyclonal Antibody

### Description

<b>Product type</b>	Primary Antibody
<b>Code</b>	BT-AP00189
<b>Host</b>	Rabbit
<b>Isotype</b>	IgG
<b>Size</b>	20ul, 50ul, 100ul
<b>Immunogen</b>	The antiserum was produced against synthesized peptide derived from human ACOT8. AA range:131-180
<b>Mol wt</b>	35914
<b>Species reactivity</b>	Human
<b>Clonality</b>	Polyclonal
<b>Recommended application</b>	WB, IHC-p, IF, ELISA
<b>Concentration</b>	1 mg/ml
<b>Full name</b>	ACOT8 Antibody
<b>Synonyms</b>	ACOT8; ACTEIII; PTE1; PTE2; Acyl-coenzyme A thioesterase 8; Acyl-CoA thioesterase 8; Choloyl-coenzyme A thioesterase; HIV-Nef-associated acyl-CoA thioesterase; PTE-2; Peroxisomal acyl-coenzyme A thioe

**This product is for research use only, not for use in human, therapeutic or diagnostic procedure.**

### Background

Acyl-CoA thioesterase 8 encoded by ACOT8 is a peroxisomal thioesterase that appears to be involved more in the oxidation of fatty acids rather than in their formation. The encoded protein can bind to the human immunodeficiency virus-1 protein Nef, and mediate Nef-induced down-regulation of CD4 in T-cells.

### Recommended Dilution

WB: 1: 500 - 1: 2000

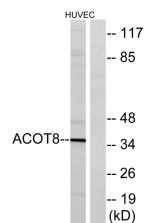
IHC: 1: 100 - 1: 300

IF: 1: 200 - 1: 1000

ELISA: 1: 40000

Not yet tested in other applications.

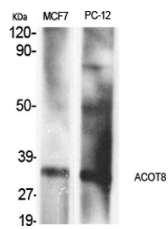
### Images



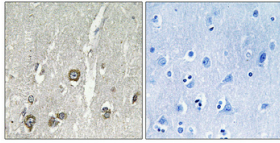
Western blot analysis of lysates from HUVEC cells, using ACOT8 Antibody. The lane on the right is blocked with the synthesized peptide.



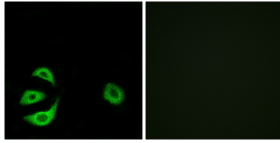
Western Blot analysis of HuvEc cells using ACOT8 Polyclonal Antibody



Western Blot analysis of various cells using ACOT8 Polyclonal Antibody



Immunohistochemical analysis of paraffin-embedded Human brain. Antibody was diluted at 1:100(4° overnight). High-pressure and temperature Tris-EDTA,pH8.0 was used for antigen retrieval. Negative contrl (right) obtained from antibody was pre-absorbed by immunogen peptide.



Immunofluorescence analysis of A549 cells, using ACOT8 Antibody. The picture on the right is blocked with the synthesized peptide.

### Storage

-20°C for one year

501 Changsheng S Rd, Nanhu Dist, Jiaxing, Zhejiang, China

Tel: 86 21 31007137 | E-mail: [save@bt-laboratory.com](mailto:save@bt-laboratory.com) | [www.bt-laboratory.com](http://www.bt-laboratory.com)