

## Acrp30 Polyclonal Antibody

### Description

<b>Product type</b>	Primary Antibody
<b>Code</b>	BT-AP00195
<b>Host</b>	Rabbit
<b>Isotype</b>	IgG
<b>Size</b>	20ul, 50ul, 100ul
<b>Immunogen</b>	The antiserum was produced against synthesized peptide derived from human Acrp30. AA range:6-55
<b>Mol wt</b>	26414
<b>Species reactivity</b>	Human, Mouse, Rat
<b>Clonality</b>	Polyclonal
<b>Recommended application</b>	WB, ELISA
<b>Concentration</b>	1 mg/ml
<b>Full name</b>	Acrp30 Antibody
<b>Synonyms</b>	ADIPOQ; ACDC; ACRP30; APM1; GBP28; Adiponectin; 30 kDa adipocyte complement-related protein; Adipocyte complement-related 30 kDa protein; ACRP30; Adipocyte; C1q and collagen domain-containing protein

This product is for research use only, not for use in human, therapeutic or diagnostic procedure.

### Background

ADIPOQ is expressed in adipose tissue exclusively. It encodes a protein (adiponectin, C1Q and collagen domain containing) with similarity to collagens X and VIII and complement factor C1q. The encoded protein circulates in the plasma and is involved with metabolic and hormonal processes. Mutations in ADIPOQ are associated with adiponectin deficiency. Multiple alternatively spliced variants, encoding the same protein, have been identified.

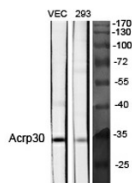
### Recommended Dilution

WB: 1: 500 - 1: 2000

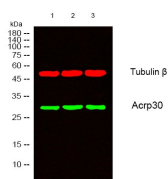
ELISA: 1: 10000

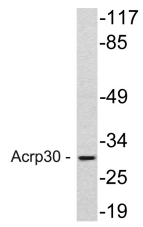
Not yet tested in other applications.

### Images

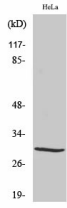


Western Blot analysis of various cells using Acrp30 Polyclonal Antibody diluted at 1:1000





Western blot analysis of lysate from HeLa cells, using Acrp30 antibody.



Western Blot analysis of HeLa cells using Acrp30 Polyclonal Antibody diluted at 1:1000

### Storage

-20°C for one year

501 Changsheng S Rd, Nanhu Dist, Jiaxing, Zhejiang, China

Tel: 86 21 31007137 | E-mail: [save@bt-laboratory.com](mailto:save@bt-laboratory.com) | [www.bt-laboratory.com](http://www.bt-laboratory.com)