

ACSS1 Polyclonal Antibody

Description

Product type	Primary Antibody
Code	BT-AP00202
Host	Rabbit
Isotype	IgG
Size	20ul, 50ul, 100ul
Immunogen	Synthetic peptide from human protein at AA range: 620-689
Mol wt	74857
Species reactivity	Human, Mouse, Rat
Clonality	Polyclonal
Recommended application	WB, ELISA
Concentration	1 mg/ml
Full name	ACSS1 Antibody
Synonyms	ACSS1 ACAS2L KIAA1846

This product is for research use only, not for use in human, therapeutic or diagnostic procedure.

Background

ACSS1 (acyl-CoA synthetase short-chain family member 1) encodes a mitochondrial acetyl-CoA synthetase enzyme. A similar protein in mice plays an important role in the tricarboxylic acid cycle by catalyzing the conversion of acetate to acetyl CoA. Alternatively spliced transcript variants encoding multiple isoforms have been observed for ACSS1.

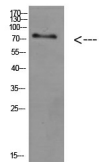
Recommended Dilution

WB: 1: 500 - 2000

ELISA: 1: 10000 - 20000

Not yet tested in other applications.

Images



Western Blot analysis of HEPG2 cells using Antibody diluted at 800. Secondary antibody was diluted at 1:20000

Storage

-20°C for one year