

ACSVL4 Polyclonal Antibody

Description

Product type	Primary Antibody
Code	BT-AP00204
Host	Rabbit
Isotype	IgG
Size	20ul, 50ul, 100ul
Immunogen	The antiserum was produced against synthesized peptide derived from human SLC27A4. AA range:61-110
Mol wt	72064
Species reactivity	Human
Clonality	Polyclonal
Recommended application	IF, ELISA
Concentration	1 mg/ml
Full name	ACSVL4 Antibody
Synonyms	SLC27A4; ACSVL4; FATP4; Long-chain fatty acid transport protein 4; FATP-4; Fatty acid transport protein 4; Solute carrier family 27 member 4

This product is for research use only, not for use in human, therapeutic or diagnostic procedure.

Background

SLC27A4 encodes a member of a family of fatty acid transport proteins, which are involved in translocation of long-chain fatty acids cross the plasma membrane. This protein is expressed at high levels on the apical side of mature enterocytes in the small intestine, and appears to be the principal fatty acid transporter in enterocytes. Clinical studies suggest this gene as a candidate gene for the insulin resistance syndrome. Mutations in this gene have been associated with ichthyosis prematurity syndrome.

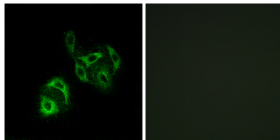
Recommended Dilution

IF: 1: 200 - 1: 1000

ELISA: 1: 20000

Not yet tested in other applications.

Images



Immunofluorescence analysis of A549 cells, using SLC27A4 Antibody. The picture on the right is blocked with the synthesized peptide.

Storage

-20°C for one year