

## ACSVL6 Polyclonal Antibody

### Description

<b>Product type</b>	Primary Antibody
<b>Code</b>	BT-AP00205
<b>Host</b>	Rabbit
<b>Isotype</b>	IgG
<b>Size</b>	20ul, 50ul, 100ul
<b>Immunogen</b>	The antiserum was produced against synthesized peptide derived from human SLC27A5. AA range:481-530
<b>Mol wt</b>	75385
<b>Species reactivity</b>	Human
<b>Clonality</b>	Polyclonal
<b>Recommended application</b>	WB, IHC-p, IF, ELISA
<b>Concentration</b>	1 mg/ml
<b>Full name</b>	ACSVL6 Antibody
<b>Synonyms</b>	SLC27A5; ACSB; ACSVL6; FACVL3; FATP5; Bile acyl-CoA synthetase; BACS; Bile acid-CoA ligase; BA-CoA ligase; BAL; Cholate--CoA ligase; Fatty acid transport protein 5; FATP-5; Fatty-acid-coenzyme A ligas

**This product is for research use only, not for use in human, therapeutic or diagnostic procedure.**

### Background

The solute carrier family 27 member 5 encoded by SLC27A5 is an isozyme of very long-chain acyl-CoA synthetase (VLCS). It is capable of activating very long-chain fatty-acids containing 24- and 26-carbons. It is expressed in liver and associated with endoplasmic reticulum but not with peroxisomes. Its primary role is in fatty acid elongation or complex lipid synthesis rather than in degradation. This gene has a mouse ortholog.

### Recommended Dilution

WB: 1: 500 - 1: 2000

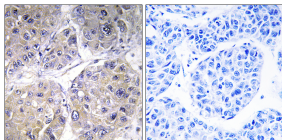
IHC: 1: 100 - 1: 300

IF: 1: 200 - 1: 1000

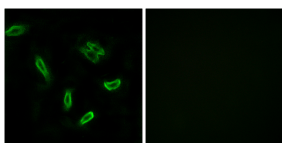
ELISA: 1: 40000

Not yet tested in other applications.

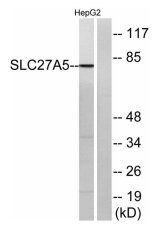
### Images



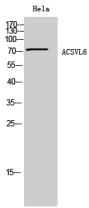
Immunohistochemistry analysis of paraffin-embedded human liver carcinoma tissue, using SLC27A5 Antibody. The picture on the right is blocked with the synthesized peptide.



Immunofluorescence analysis of A549 cells, using SLC27A5 Antibody. The picture on the right is blocked with the synthesized peptide.



Western blot analysis of lysates from HepG2 cells, using SLC27A5 Antibody. The lane on the right is blocked with the synthesized peptide.



Western Blot analysis of HeLa cells using ACSVL6 Polyclonal Antibody diluted at 1:1000

### Storage

-20°C for one year

501 Changsheng S Rd, Nanhu Dist, Jiaxing, Zhejiang, China

Tel: 86 21 31007137 | E-mail: [save@bt-laboratory.com](mailto:save@bt-laboratory.com) | [www.bt-laboratory.com](http://www.bt-laboratory.com)