

## Actin Polyclonal Antibody

### Description

<b>Product type</b>	Primary Antibody
<b>Code</b>	BT-AP00210
<b>Host</b>	Rabbit
<b>Isotype</b>	IgG
<b>Size</b>	20ul, 50ul, 100ul
<b>Immunogen</b>	The antiserum was produced against synthesized peptide derived from human Actin. AA range:326-375
<b>Mol wt</b>	41737
<b>Species reactivity</b>	Human, Mouse, Rat
<b>Clonality</b>	Polyclonal
<b>Recommended application</b>	WB, IHC-p, ELISA
<b>Concentration</b>	1 mg/ml
<b>Full name</b>	Actin Antibody
<b>Synonyms</b>	ACTB; Actin; cytoplasmic 1; Beta-actin; POTEKP; ACTBL3; FKSG30; Putative beta-actin-like protein 3; Kappa-actin; POTE ankyrin domain family member K; ACTG1; ACTB; ACTG; Actin, cytoplasmic 2; Gamma-ac

This product is for research use only, not for use in human, therapeutic or diagnostic procedure.

### Background

ACTB encodes one of six different actin proteins (actin beta). Actins are highly conserved proteins that are involved in cell motility, structure, and integrity. This actin is a major constituent of the contractile apparatus and one of the two nonmuscle cytoskeletal actins.

### Recommended Dilution

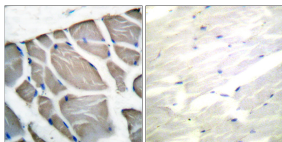
WB: 1: 500 - 1: 2000

IHC: 1: 100 - 1: 300

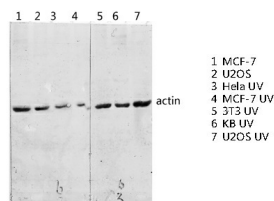
ELISA: 1: 10000

Not yet tested in other applications.

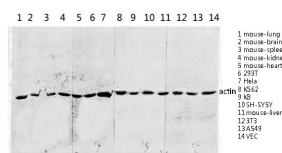
### Images



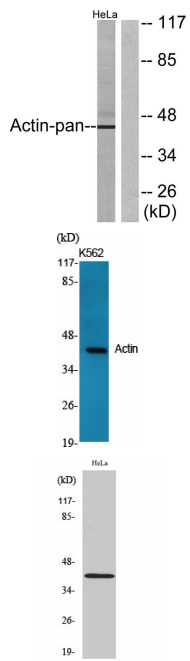
Immunohistochemistry analysis of paraffin-embedded human skeletal muscle tissue, using Actin-pan Antibody. The picture on the right is blocked with the synthesized peptide.



Western blot analysis of various lysis using Actin Polyclonal Antibody diluted at 1:2000. Secondary antibody was diluted at 1:20000



Western blot analysis of various lysis using Actin Polyclonal Antibody diluted at 1:2000. Secondary antibody was diluted at 1:20000



Western blot analysis of lysates from HeLa cells, using Actin-pan Antibody. The lane on the right is blocked with the synthesized peptide.

Western Blot analysis of various cells using Actin Polyclonal Antibody diluted at 1:2000

Western Blot analysis of HeLa cells using Actin Polyclonal Antibody diluted at 1:2000

### Storage

-20°C for one year

501 Changsheng S Rd, Nanhu Dist, Jiaxing, Zhejiang, China

Tel: 86 21 31007137 | E-mail: [save@bt-laboratory.com](mailto:save@bt-laboratory.com) | [www.bt-laboratory.com](http://www.bt-laboratory.com)