

## Actin Alpha1 Polyclonal Antibody

### Description

<b>Product type</b>	Primary Antibody
<b>Code</b>	BT-AP00211
<b>Host</b>	Rabbit
<b>Isotype</b>	IgG
<b>Size</b>	20ul, 50ul, 100ul
<b>Immunogen</b>	The antiserum was produced against synthesized peptide derived from human Actin-alpha-1. AA range:1-50
<b>Mol wt</b>	42051
<b>Species reactivity</b>	Human, Mouse, Rat
<b>Clonality</b>	Polyclonal
<b>Recommended application</b>	WB, IHC-p, ELISA
<b>Concentration</b>	1 mg/ml
<b>Full name</b>	Actin alpha1 Antibody
<b>Synonyms</b>	ACTA1; ACTA; Actin; alpha skeletal muscle; Alpha-actin-1

**This product is for research use only, not for use in human, therapeutic or diagnostic procedure.**

### Background

Actin, alpha 1, skeletal muscle encoded by ACTA1 belongs to the actin family of proteins, which are highly conserved proteins that play a role in cell motility, structure and integrity. Alpha, beta and gamma actin isoforms have been identified, with alpha actins being a major constituent of the contractile apparatus, while beta and gamma actins are involved in the regulation of cell motility. This actin is an alpha actin that is found in skeletal muscle. Mutations in this gene cause nemaline myopathy type 3, congenital myopathy with excess of thin myofilaments, congenital myopathy with cores, and congenital myopathy with fiber-type disproportion, diseases that lead to muscle fiber defects.

### Recommended Dilution

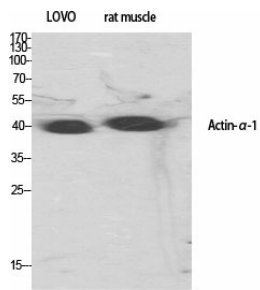
WB: 1: 500 - 1: 2000

IHC: 1: 100 - 1: 300

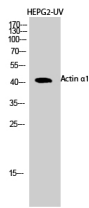
ELISA: 1: 20000

Not yet tested in other applications.

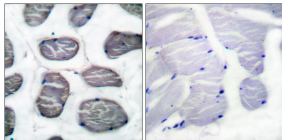
### Images



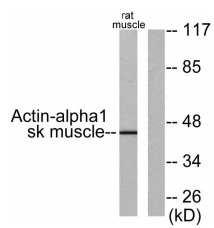
Western Blot analysis of various cells using Actin  $\alpha$ 1 Polyclonal Antibody diluted at 1:500



Western Blot analysis of HEPG2-UV cells using Actin  $\alpha$ 1 Polyclonal Antibody diluted at 1:500



Immunohistochemistry analysis of paraffin-embedded human muscle tissue, using Actin-alpha-1 Antibody. The picture on the right is blocked with the synthesized peptide.



Western blot analysis of lysates from rat muscle cells, using Actin-alpha-1 Antibody. The lane on the right is blocked with the synthesized peptide.

### Storage

-20°C for one year

501 Changsheng S Rd, Nanhu Dist, Jiaxing, Zhejiang, China

Tel: 86 21 31007137 | E-mail: [save@bt-laboratory.com](mailto:save@bt-laboratory.com) | [www.bt-laboratory.com](http://www.bt-laboratory.com)