

Actin Alpha3 Polyclonal Antibody

Description

Product type	Primary Antibody
Code	BT-AP00212
Host	Rabbit
Isotype	IgG
Size	20ul, 50ul, 100ul
Immunogen	The antiserum was produced against synthesized peptide derived from human Actin-gamma2. AA range: 1-50
Mol wt	41877
Species reactivity	Human, Mouse, Rat
Clonality	Polyclonal
Recommended application	WB, IHC-p, IF, ELISA
Concentration	1 mg/ml
Full name	Actin alpha3 Antibody
Synonyms	ACTG2; ACTA3; ACTL3; ACTSG; Actin; gamma-enteric smooth muscle; Alpha-actin-3; Gamma-2-actin; Smooth muscle gamma-actin

This product is for research use only, not for use in human, therapeutic or diagnostic procedure.

Background

Actins are highly conserved proteins that are involved in various types of cell motility and in the maintenance of the cytoskeleton. Three types of actins, alpha, beta and gamma, have been identified in vertebrates. Alpha actins are found in muscle tissues and are a major constituent of the contractile apparatus. The beta and gamma actins co-exist in most cell types as components of the cytoskeleton and as mediators of internal cell motility. ACTG2 encodes actin gamma 2; a smooth muscle actin found in enteric tissues. Alternative splicing results in multiple transcript variants encoding distinct isoforms. Based on similarity to peptide cleavage of related actins, the mature protein of ACTG2 is formed by removal of two N-terminal peptides.

Recommended Dilution

WB: 1: 500 - 1: 2000

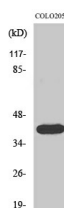
IHC: 1: 100 - 1: 300

IF: 1: 200 - 1: 1000

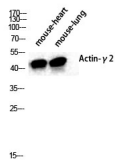
ELISA: 1: 20000

Not yet tested in other applications.

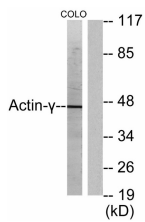
Images



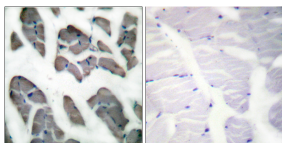
Western Blot analysis of COLO205 cells using Actin α 3 Polyclonal Antibody diluted at 1:2000



Western Blot analysis of various cells using Actin $\alpha 3$ Polyclonal Antibody diluted at 1:2000



Western blot analysis of lysates from COLO205 cells, using Actin-gamma2 Antibody. The lane on the right is blocked with the synthesized peptide.



Immunohistochemistry analysis of paraffin-embedded human skeletal muscle tissue, using Actin-gamma2 Antibody. The picture on the right is blocked with the synthesized peptide.

Storage

-20°C for one year

501 Changsheng S Rd, Nanhu Dist, Jiaxing, Zhejiang, China
 Tel: 86 21 31007137 | E-mail: save@bt-laboratory.com | www.bt-laboratory.com