

Actinin-Alpha1/2/3/4 Polyclonal Antibody

Description

Product type	Primary Antibody
Code	BT-AP00216
Host	Rabbit
Isotype	IgG
Size	20ul, 50ul, 100ul
Immunogen	The antiserum was produced against synthesized peptide derived from human ACTN1/2/3/4. AA range:21-70
Mol wt	104854
Species reactivity	Human, Mouse, Rat
Clonality	Polyclonal
Recommended application	WB, IHC-p, ELISA
Concentration	1 mg/ml
Full name	Actinin-alpha1/2/3/4 Antibody
Synonyms	ACTN1; Alpha-actinin-1; Alpha-actinin cytoskeletal isoform; F-actin cross-linking protein; Non-muscle alpha-actinin-1; ACTN2; Alpha-actinin-2; Alpha-actinin skeletal muscle isoform 2; F-actin cross-li

This product is for research use only, not for use in human, therapeutic or diagnostic procedure.

Background

Alpha actinins belong to the spectrin gene superfamily which represents a diverse group of cytoskeletal proteins, including the alpha and beta spectrins and dystrophins. Alpha actinin is an actin-binding protein with multiple roles in different cell types. In nonmuscle cells, the cytoskeletal isoform is found along microfilament bundles and adherens-type junctions, where it is involved in binding actin to the membrane. In contrast, skeletal, cardiac, and smooth muscle isoforms are localized to the Z-disc and analogous dense bodies, where they help anchor the myofibrillar actin filaments. ACTN1 encodes a nonmuscle, cytoskeletal, alpha actinin isoform and maps to the same site as the structurally similar erythroid beta spectrin gene. Three transcript variants encoding different isoforms have been found for ACTN1.

Recommended Dilution

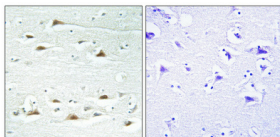
WB: 1: 500 - 1: 2000

IHC: 1: 100 - 1: 300

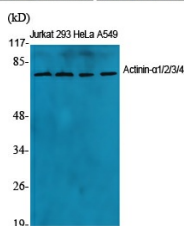
ELISA: 1: 20000

Not yet tested in other applications.

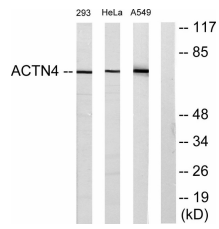
Images



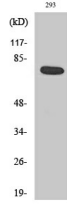
Immunohistochemical analysis of paraffin-embedded Human brain. Antibody was diluted at 1:100(4° overnight). High-pressure and temperature Tris-EDTA,pH8.0 was used for antigen retrieval. Negative contrl (right) obtained from antibody was pre-absorbed by immunogen peptide.



Western Blot analysis of various cells using Actinin- α 1/2/3/4 Polyclonal Antibody diluted at 1:1000



Western blot analysis of lysates from 293, HeLa, and A549 cells, using ACTN1/2/3/4 Antibody. The lane on the right is blocked with the synthesized peptide.



Western Blot analysis of A549 cells using Actinin- α 1/2/3/4 Polyclonal Antibody diluted at 1:1000

Storage

-20°C for one year

501 Changsheng S Rd, Nanhu Dist, Jiaxing, Zhejiang, China

Tel: 86 21 31007137 | E-mail: save@bt-laboratory.com | www.bt-laboratory.com