

Actinin-Alpha2/3 Polyclonal Antibody

Description

Product type	Primary Antibody
Code	BT-AP00217
Host	Rabbit
Isotype	IgG
Size	20ul, 50ul, 100ul
Immunogen	The antiserum was produced against synthesized peptide derived from human Actinin alpha-2/3. AA range:31-80
Mol wt	103854
Species reactivity	Human, Mouse, Rat
Clonality	Polyclonal
Recommended application	WB, IHC-p, IF, ELISA
Concentration	1 mg/ml
Full name	Actinin-alpha2/3 Antibody
Synonyms	ACTN2; Alpha-actinin-2; Alpha-actinin skeletal muscle isoform 2; F-actin cross-linking protein; ACTN3; Alpha-actinin-3; Alpha-actinin skeletal muscle isoform 3; F-actin cross-linking protein

This product is for research use only, not for use in human, therapeutic or diagnostic procedure.

Background

Alpha actinins belong to the spectrin gene superfamily which represents a diverse group of cytoskeletal proteins, including the alpha and beta spectrins and dystrophins. Alpha actinin is an actin-binding protein with multiple roles in different cell types. In nonmuscle cells, the cytoskeletal isoform is found along microfilament bundles and adherens-type junctions, where it is involved in binding actin to the membrane. In contrast, skeletal, cardiac, and smooth muscle isoforms are localized to the Z-disc and analogous dense bodies, where they help anchor the myofibrillar actin filaments. ACTN2 encodes a muscle-specific, alpha actinin isoform that is expressed in both skeletal and cardiac muscles. Several transcript variants encoding different isoforms have been found for ACTN2.

Recommended Dilution

WB: 1: 500 - 1: 2000

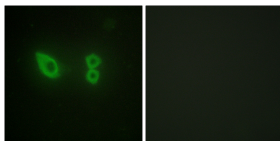
IHC: 1: 100 - 1: 300

IF: 1: 200 - 1: 1000

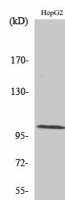
ELISA: 1: 20000

Not yet tested in other applications.

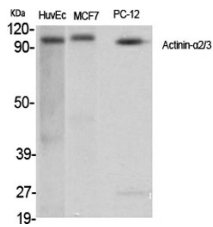
Images



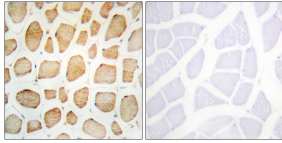
Immunofluorescence analysis of HeLa cells, using Actinin alpha-2/3 Antibody. The picture on the right is blocked with the synthesized peptide.



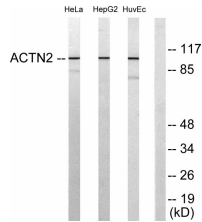
Western Blot analysis of HuvEc cells using Actinin- α 2/3 Polyclonal Antibody



Western Blot analysis of various cells using Actinin- α 2/3 Polyclonal Antibody



Immunohistochemistry analysis of paraffin-embedded human skeletal muscle tissue, using Actinin alpha-2/3 Antibody. The picture on the right is blocked with the synthesized peptide.



Western blot analysis of lysates from HepG2, HeLa, and HUVEC cells, using Actinin alpha-2/3 Antibody. The lane on the right is blocked with the synthesized peptide.

Storage

-20°C for one year

501 Changsheng S Rd, Nanhu Dist, Jiaxing, Zhejiang, China

Tel: 86 21 31007137 | E-mail: save@bt-laboratory.com | www.bt-laboratory.com